



SERENITY AND UNITY  
Amels

BARNES  
YACHTING





## SERENITY AND UNITY Amels

### Luxury Afloat:

## SERENITY AND UNITY

Step aboard the unrivaled epitome of maritime opulence with Serenity & Unity, a 62.4 meters (204'7") masterpiece meticulously crafted by Amels in 2018.

Designed by the prestigious Tim Heywood and Winch Design, this yacht exudes elegance and sophistication in every detail.

From the luxurious interiors styled by Winch Design to the cutting-edge technology seamlessly integrated throughout, Serenity & Unity offers a truly unparalleled yachting experience.

Revel in the spacious cabins, sun deck with a Jacuzzi, and a beach club equipped with top-of-the-line gym facilities.

Immerse yourself in the world of luxury curated by industry-leading designers aboard Serenity & Unity – where every moment is a testament to refined taste and unparalleled comfort.









# SERENITY AND UNITY Amels

## Specifications

Length: 62.4 meters (204'7")

Beam: 10.6 meters (34' 9")

Draft: 3.59 meters (11'8")

Flag: Langkawi, Malaysia

Year Built: 2018

Builder: Amels

Accommodations: 12 guests in 6 cabins

Crew: Captain + 16 crew

Price: POA

## General Information

- TYPE: Motor Yacht
- CONSTRUCTION: Steel hull and aluminium superstructure
- INTERIOR DESIGNER: Winch Design
- EXTERIOR DESIGNER: Tim Heywood
- FUEL CAPACITY: 150,000 liters
- WATER CAPACITY: 37,600 liters
- GROSS TONNAGE: 1161
- ENGINES: 2 x 1500kW Caterpillar 3512C-HD V12 Diesel
- CRUISING SPEED: 15 knots
- MAX SPEED: 17 knots
- RANGE: 5000 nautical miles @ 12 knots
- CLASSIFICATION: Lloyds, 100A1 SSC Yacht Mono G6 LMC, UMS, SCM, Lloyds CM1, MS,(I), Yacht, Mono, RU, ERO

## Description

### *Accommodation Overview:*

Accommodation for 12 guests in 6 cabins, Captain + 16 crew in 8 cabins.

#### **Owner:**

1 Master suite on the main deck with bathroom, shower, and bathtub in onyx.  
Divided into two sections: forward with master bed and dressing area, aft with master lounge/office including a vanity and desk with seating.

#### **Guests:**

2 Double cabins with shower on the bridge deck.  
2 Large doubles on the lower deck with ensuite shower.  
1 Twin cabin that can convert to a double with ensuite shower.

#### **Crew:**

1 Captain's cabin on the bridge deck.  
8 Double cabins on the lower deck.



## Machinery Details

### *Main Engines:*

2 x 1500kW Caterpillar 3512C-HD V12 Diesel  
Engine Hours: Port ME: 6278h, Stbd ME: 6253h  
Gear Boxes: 2 x Reintjes WAF 763 reduction gear boxes  
Shafts: Rubber Design RD-185-OL  
Propellers: 2 x SIP bronze fixed 5-blade propellers fix pitch zs  
Consumptions: Approximately 350 L/hr @ 12 knots  
Range: 5000 nautical miles @ 12 knots  
Cruising Speed: 15 knots  
Economical Speed: 12 knots  
Maximum Speed: 17 knots

### *Other Machinery:*

Steering System: Promac double ram  
Rudder Angle Indicators: 35 degrees to each side  
Stabilizers: Quantum QC-1800 HD XT with zero speed  
Fuel Oil Separator: Alfa Laval P605  
Oil/Water Separator: Facet CPS-2,5B  
Bilge Pump: 2 x Azcue LN-EF 50-200  
Fire Pump: Azcue CA65/20-A  
Boilers: 2 x ACV E-Tech 36 V10 with heat recovery  
Sewage Treatment: Hamann HL-CONT PLUS 05  
WC's: Evac 900 with 2 x Jets 30MB-D  
Air-Conditioning: Heinen & Hopman BD1212 with dual 8GE-60Y-35P chilled water unit

## Generators

- 3 x 150 kW CAT C9
- Generator Hours: DG port: 16612, DG mid: 16308, DG stb: 16606
- Emergency Generator: 1 x 125 kW CAT 6.6
- Electricity: 400V & 230V 50 Hz
- Shore Power: 2 x ASEA AC125 LC-3 200 kW



## SERENITY AND UNITY Amels

### Communication & Navigation

#### *Communication Systems*

- Sat Com:
  - 1 x Sailor 900 VSAT,
  - 2 x Seatel TVRO
- Cellular System:
  - 2 x GSM,
  - 2 x 4G antennas,
  - 1 x Pepwave
- VHF Radiotelephones:
  - 2 x Sailor 6222 VHF DSC,
  - 3 x Sailor SP3510VHF,
  - 2 x Sailor 3520 VHF GMDSS
- SSB Radiotelephone: 1 x Sailor 6301 MF/HF
- Telephone: Cisco IP phones
- Exchange: Cisco IP exchange
- UHF Communications: 20 x Hytera UHF, UHF repeater system

#### *Navigation Systems*

- Magnetic Compass: Anschutz
- Gyro Compass: Anschutz
- Automatic Pilot: Anschutz
- Log: Anschutz
- Echo Sounder: Anschutz
- Radar: Raithon X/S Band, Furuno
- Chart Plotter: 2x Raithon NX
- GPS and AIS: Sailor, Sailor
- Navtex: Sailor

### Security, Fire Fighting & Safety

- Safety: SOLAS LY3, additional lifejackets & immersion suits
- Medical: MCA Class A medical kit MSOS
- Firefighting Equipment: SOLAS LY3, Scott Dragger equipment
- Alarms & Monitoring Systems: Elettrimar monitoring with remote alarm system
- Security: External IP CCTV cameras with recording

### Deck Equipment

- Anchor Windlass: 2 x Stein Sistemi
- Aft Warping Capstans: 2 x Stein Sistemi
- Ground Tackle: Qingdao Anchor Chain 2 x (6 Shackles 24mm)
- Boat Crane & Davits:
  - 1 x Pascoe Limo Tender: 1 x Vandriel Ceiling Crane
  - 1 x Pascoe Rescue Tender: 1 x Vandriel Ceiling Crane
- Swimming Platform: Hydraulic Retractable Swim Stairs, Large Mounted Umbrella, Shower, Sun Loungers
- Searchlight: 1x On Forward Mast
- Awning:
  - 1 x Aft Awning Sun Deck
  - 1 x Aft Awnings Bridge Deck
- Helicopter Capability: 1 x Touch And Go (Not Certified)



## Tenders and Toys

### *Tenders:*

- 1 x Pascoe Solas Rib 7 Meter (Yanmar ) Rescue Boat: Jet Drive
- 1 x Pascoe Limo Tender 11 Meter (Yanmar) Twin Engine.  
Beam. 2.95m.  
Engines. 2 x Yanmar 260hp Inboards / Mercury Brava 1 Drives.  
Speed. 35 Knots +/-  
Total Displacement. 5,142 kg Light.

### *Watersports Equipment:*

- 2 x Yamaha Jet Ski 300 Gtx
- Fun Air Custom Platform
- Custom Sea Pool With Jellyfish Net
- 2 x Paddleboards
- 1 x Kayak (2 Persons)
- 5 x Sea Bobs F5s
- Water-Ski Equipment
- Wakeboard Equipment Towable Toys
- Masks, Snorkels, Finns, Buoyancy Aids

## Other Equipment

Jacuzzi Dip Pool: Jacuzzi Whirlpool

Ship's Safes:

2 X Captain's Cabin, 1 X Master Cabin, Safe In Each Guest Cabin

Elevator:

Dumb Waiter Lower Deck to Sundeck Deck Forward

Gym Equipment

Gym located on the top sundeck and beach club offers the following equipment:

- 2 X Technogym Treadmill
- Elliptical Trainer Technogym
- Reforma Pelatties Machine
- Dumbbells
- Kettlebells
- Resistance Bands
- Yoga Mats

## Entertainment Equipment

### *Audio / Visual Systems:*

Crestron Entertainment System Intergrated With Kartina Tv, Nowtv, Apple Tv, Sky Uk Decoders, Netflix, Plex Media Server, Bluray Dvd, Party Mode On All Decks. Sonance And Soundweb Hi-Fi In All Areas. All Zones Are Controlled Via An Ipad, Which Also Controls Blinds, Lights And A/C.

- Main Salon: Samsung 65" 4k Smartled
- Bridge Deck Aft: Music Server & Airplay
- Skylounge: Projector With Pop-Up Screen And Samsung 75" 4k Uhd
- Sun Deck: Samsung 49" 4k Tv With 360° Rotating Lift
- Beach Club: Samsung 40" 4k Uhd On Lift
- Owners Cabin: Samsung 65" 4k Uhd With Lifting Artwork
- Guest Cabins & Captain's Cabin: Samsung 40" 4k Uhd
- Crew Mess: Samsung 55" 4k Uhd

## Domestic Equipment

### **Main Galley:**

2 x Convotherm Oes 6 10 Mini, 1 x Hobart Dishwasher

1 x Salvis Deep Fat Fryer, 1 x Rolad 4 Induction Hob

2 x Foster Fridge, 1 x Under Counter Fridge, 1 x Under Counter Freezer

### **Laundry:**

4 x Miele Washing Machines, 4 x Miele Dryers

### **Pantries:**

1 x Bridge Deck Panty with Fridge & Ice Machine

1 x Main Deck Pantry with Fridge, Miele Coffee Machine, Glass Washer, Filter Tap

### **Crew Mess:**

1 x Liebherr Fridge, 1 x Miele Microwave, 1 x Filtered Hot Water Tap

### **Beach Club:**

1 x Fridge and 1 x Ice Maker

BARNES  
YACHTING





BARNES  
YACHTING





**BARNES**  
YACHTING







# SERENITY AND UNITY

Amels







# SERENITY AND UNITY

Amels







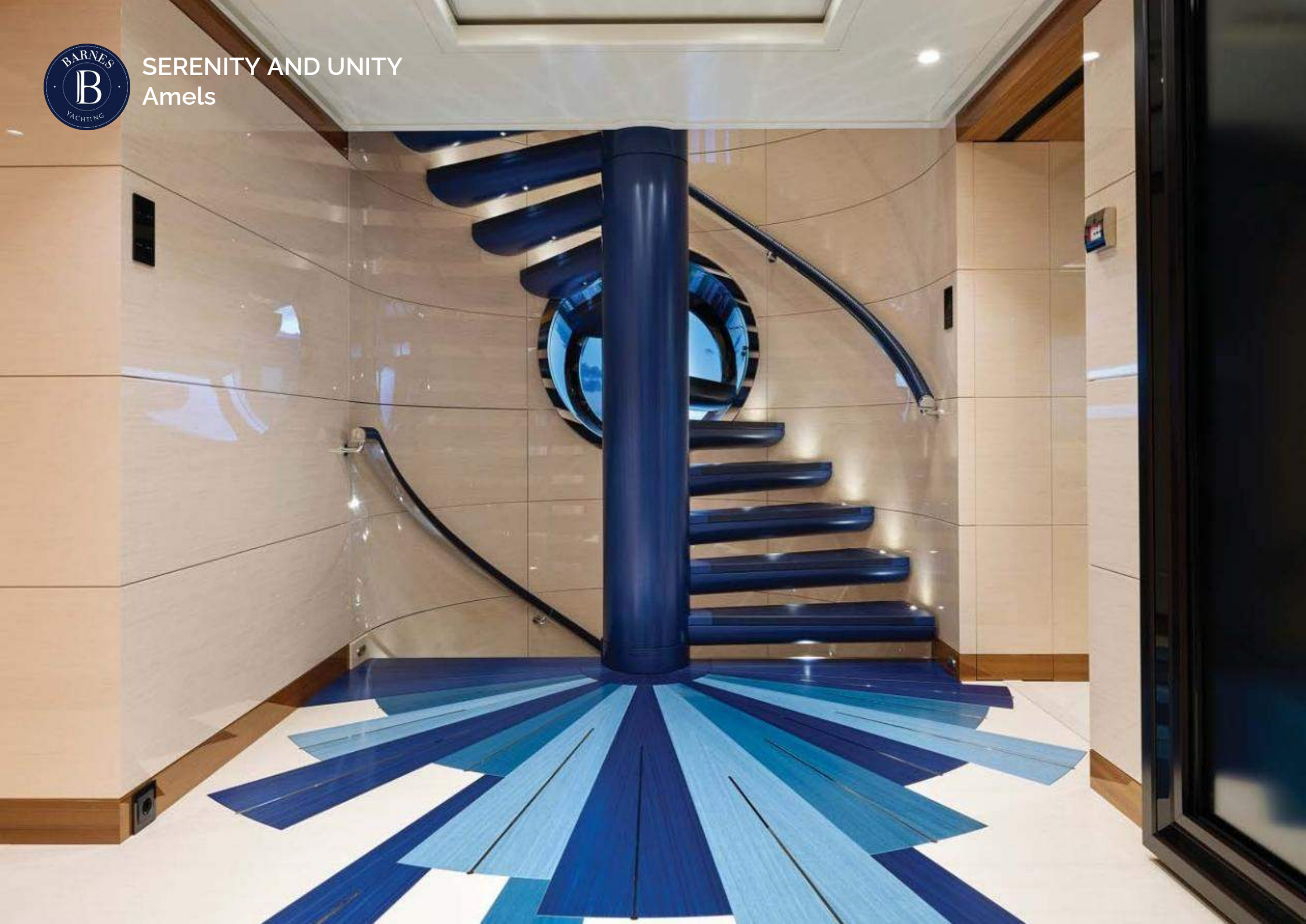
SERENITY AND UNITY  
Amels







SERENITY AND UNITY  
Amels







# SERENITY AND UNITY

Amels



**BARNES**  
YACHTING



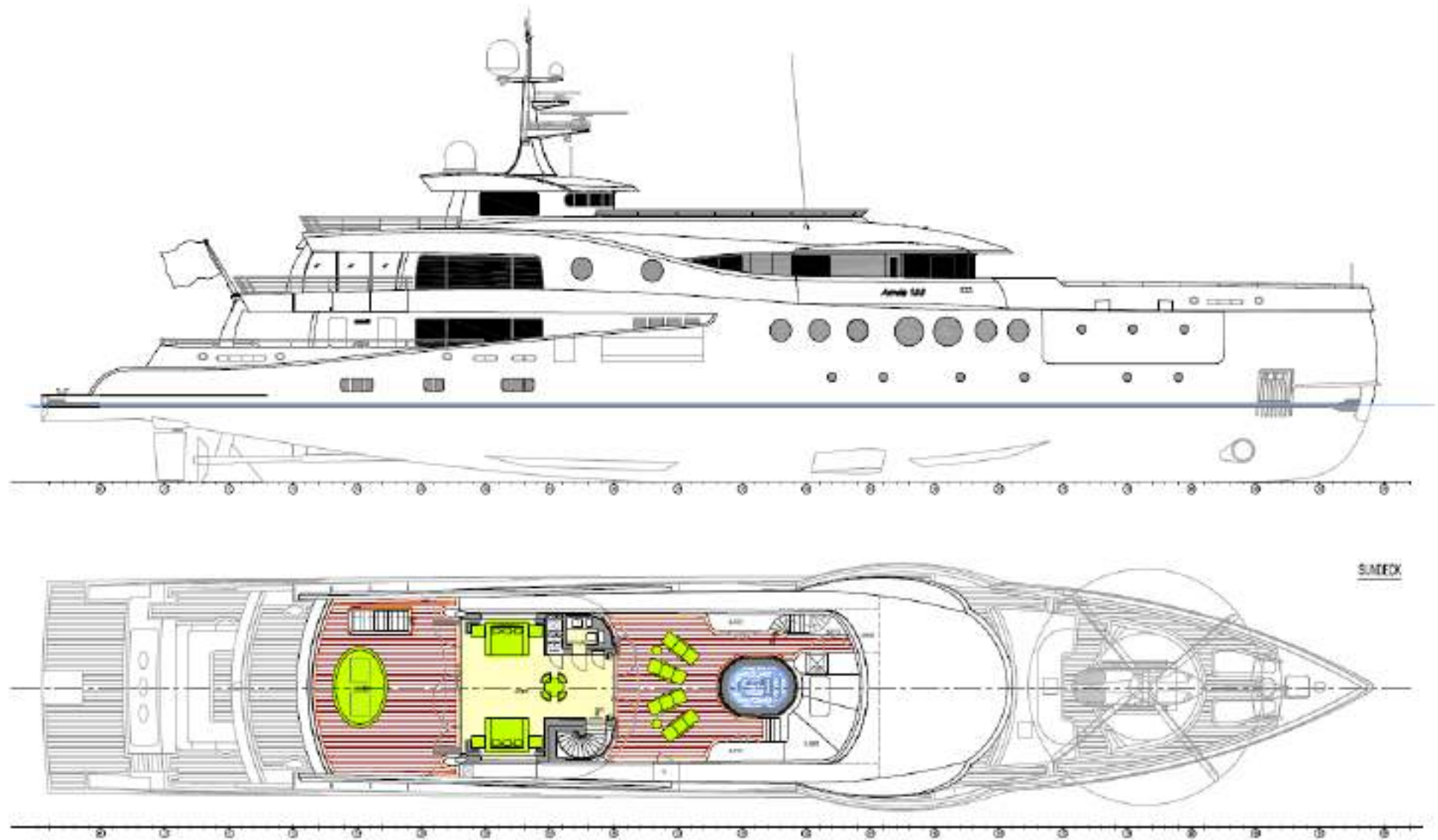


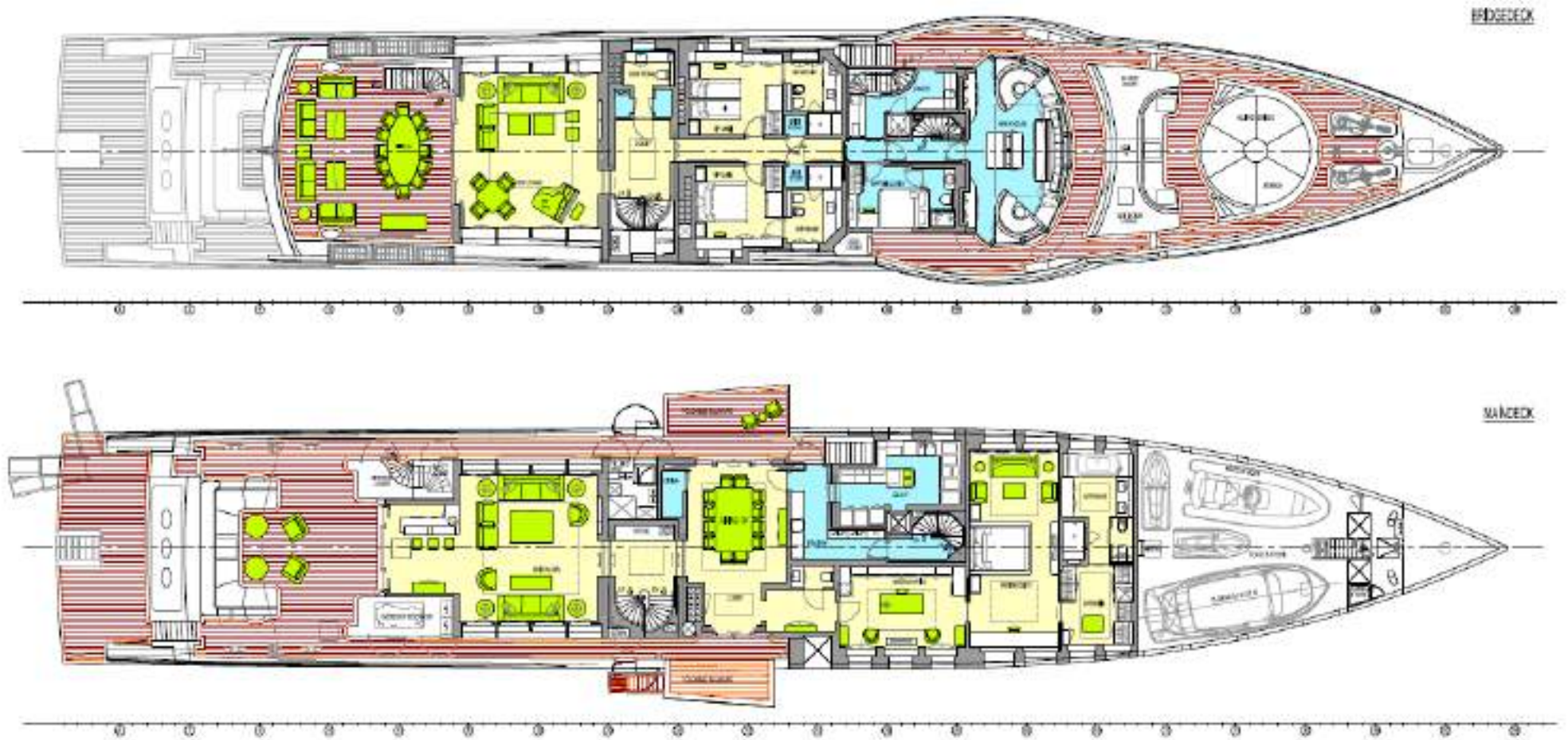
BARNES  
YACHTING



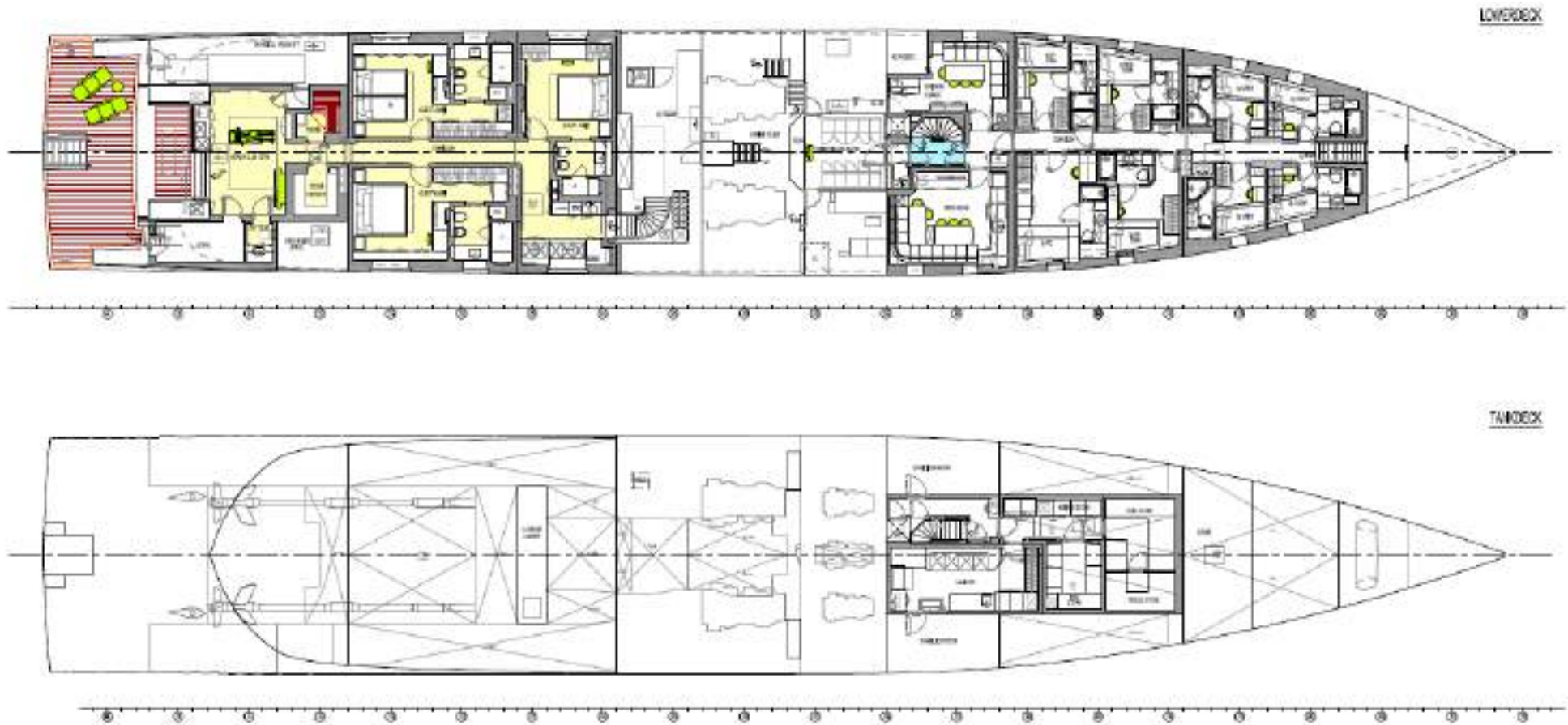












*Disclaimer: These particulars have been prepared by Barnes Yachting from information provided by the sellers and are intended as a general guide to the vessel. Barnes Yachting cannot, however, be liable for any inaccuracy. It is up to the purchaser to confirm details of concern to him by survey, inspection and/or enquiry of the seller and to ensure that the purchase contract properly reflects his concern and specific details upon which he may rely. Barnes Yachting will always advise an independent survey.*



## BARNES YACHTING

+34 634 81 37 95

Europe +44 20 4587 8777 / / USA +1 305 525 9301

[yachting@barnes-international.com](mailto:yachting@barnes-international.com)

[www.barnes-yachting.com](http://www.barnes-yachting.com)







# SERENITY AND UNITY Amels



Vessel  
Details

Guide Price: POA  
Length: 62.4m (204'7")

Built: 2018  
Lying: Bodrum, Turkey

Crew: Up to 17  
Flag: Malaysia