



WALK AROUND 46
Blu Martin

BARNES
YACHTING





WALK AROUND 46 Blu Martin

Walk Around 46: Speed, Space, Style

Blu Martin Yacht Walk Around 46 delivers a bold, fast statement in a 14 m platform built in GRP and rated to design category B. With beam max (BOA) stated as 4.27 - 6 m and a draft (T) of 0.6 m, she offers a wide stance and shallow-water confidence while keeping the profile clean and modern.

The technical data highlights a max speed (Vmax) of 42 - 45 Knots, paired with interior headroom (H-int) listed as 2 m. Light displacement is stated as 9.5 ton, with full load shown as 13.3 ton, giving buyers clear, verifiable performance context without guesswork. Engine options are listed as Mercury Verado packages: 2x V10 425 Hp, 3x V8 300 Hp, 3x V10 425 Hp, or 2x V12 600 Hp.

For living aboard, the standard version notes 2 cabins, berths stated as 4 + 2, and toilets stated as 1. Tankage is specified as 1,300 lt fuel and 480 lt fresh water, supporting well-planned days on the water. Add the joystick pilot system (Mercury) and the entertainment packages, and the spec sheet reads like a ready-to-enjoy programme.







WALK AROUND 46 Blu Martin

Specifications

Length: 14m (45.9')

Beam: 4.27m (14')

Draft: 0.6m (2')

Flag: TBD

Location: Como, Italy

Year Built/Refit: 2026 /

Builder: Blu Martin

Accommodations: 4 guests in 2 cabins

Crew: Up to -

Price: POA

General Information

Type: Motor - Sport Boat

Construction: GRP Hull and Superstructure

Interior Designer: Blu Martin

Exterior Designer: Blu Martin

Fuel Capacity: 1,300L / 343 US Gal

Water Capacity: 480L / 127 US Gal

Gross Tonnage: -

Engines: 2, Mercury, Verado V12, 600, Diesel

Cruising Speed: -

Max Speed: 45 knots

Range: -

Classification: CE

Description

Accommodation Overview:

Accommodation for 4 guests in 2 staterooms. crew.

Owner

The technical data notes 2 cabins in the standard version. Within that stated layout, an owner can plan around the published interior headroom (H-int) of 2 m and the overall length overall (LOA) of 14 m, keeping expectations aligned with the boat's documented dimensions. GRP construction and design category B are also stated in the same specification list.

Guests

Berths are stated as 4 + 2, with toilets stated as 1. These figures provide a simple reference for guest capacity planning, alongside the beam max (BOA) stated as 4.27 - 6 m and the draft (T) shown as 0.6 m.



Machinery Details

Main Engines:

2 x 425 Mercury Verado V10 40 Knots
3 x 300 Mercury Verado V8 38 Knots
3 x 425 Mercury Verado V10 42 Knots
2 x 600 Mercury Verado V12 42 Knots

Other Machinery:

Joystick Pilot System Mercury (*) + Still electronics
Dynamic trim control system (automatic flaps roll and trim control)
Stabilizer 7K (gyroscope)
Bow Thruster
Air conditioning hot / cold 21.000 BTU
Tropical air conditioning hot / cold 26.000 BTU 2
Remote controll air conditioning
Underwater led lights
Antifouling + epoxy treatment

Generators

Generator 4 Kw
Yacht Power including inverters 10 kW and batteries with dock charging and/or engine alternators
Inverter 3 Kw (with 3 batt. x 220 Amp)

VIDEO

Communication & Navigation

Communication Equipment

VHF Garmin 315i

AIS-800 Garmin Rx/Tx

Navigation Equipment

Radar Garmin Fantom 18X 50W 48MN

Electronics pack: VHF, plotter, autopilot, 2x 16" Garmin screens

Dual screen difference Garmin 19"

Costal Internet dual sim

Security, Fire Fighting & Safety

On-board equipment kit within 6 mph

Life jackets 6x self-inflatable

Life jackets 6x standard

Smoke-generating kits

Fire extinguishers 4x

Liferaft excluded

Deck Equipment

Hydraulic tender lift Besenzoni POB

Hydraulic retractable gangway

Wings

Bow table "aperitif"

Bow sun canopy with carbon fiber poles

Electric rear sunbed awning

Courtesy LED lights on deck and on walking around

Boat's name with led backlight

Chain counter

Full closing awnings

Kit covers: front cushions, external dinette, stern sunbathing, dashboard cover

Painted stripes on waterline (colour of customization)

Underwater led lights; Full deck in teak floor

Entertainment Equipment

Basic package: Fusion Apollo RA770

Fusion MS-NRX300 remote

Fusion link for iOS/Android

High Performance: Fusion SG-DA51600 5ch amp

JL-Audio 7.7" + JL-Audio 8" subwoofer

Domestic Equipment

Ice maker

Electric BBQ (220V) instead of the std kitchen

BARNES
YACHTING



BARNES
YACHTING







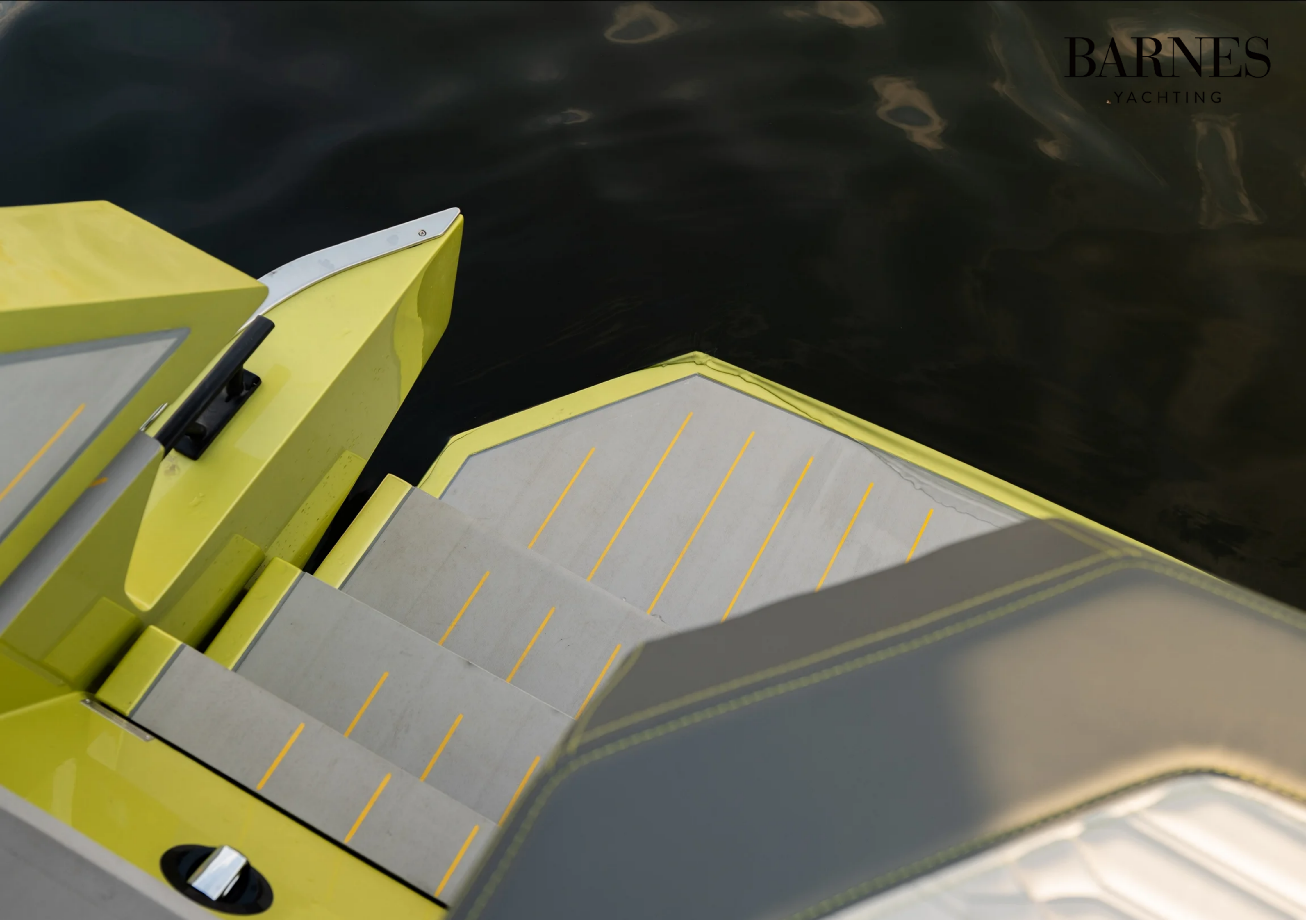




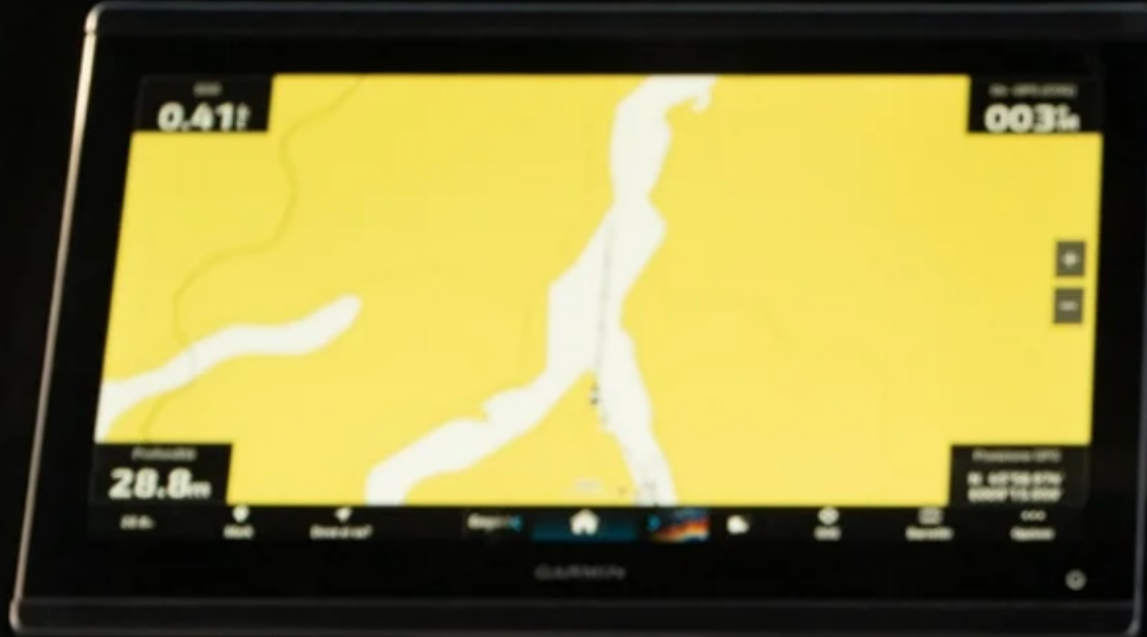














**Vessel
Details**

Guide Price: POA
Length: 14m (45.9')

Built/Refit: 2026 /
Lying: Como, Italy

Crew: Up to
Flag: TBD

Disclaimer: These particulars have been prepared by Barnes Yachting from information provided by the sellers and are intended as a general guide to the vessel. Barnes Yachting cannot, however, be liable for any inaccuracy. It is up to the purchaser to confirm details of concern to him by survey, inspection and/or enquiry of the seller and to ensure that the purchase contract properly reflects his concern and specific details upon which he may rely. Barnes Yachting will always advise an independent survey.



BARNES
YACHTING



BARNES YACHTING

+34 634 81 37 95

Europe +44 20 4587 8777 / / USA +1 305 525 9301

yachting@barnes-international.com

www.barnes-yachting.com

