



THIS IS IT
Tecnomar

BARNES
YACHTING





THIS IS IT
Tecnomar

Sculpted Power, Fluid Architectural Luxury

THIS IS IT embodies a bold new vision in contemporary yacht design, merging advanced engineering with sculptural elegance. Her sweeping curves, vast volume, and multi-hull architecture create an unmistakable profile that feels both futuristic and organic. Every surface has been crafted to elevate life at sea, offering a seamless connection between expansive outdoor decks and refined interiors.

Her 758 GT of internal volume delivers the sensation of a private floating villa, where generous spaces flow effortlessly from one area to the next. The Owner's suite rises with remarkable 3.3-meter headroom, while the guest accommodations provide privacy, comfort, and thoughtful detailing throughout. A spa, swimming pool, and multiple leisure zones enhance the onboard experience with resort-level amenities.

Designed by Centro Stile of The Italian Sea Group, THIS IS IT stands as a statement of innovation and artistry. Built in 2024, she offers a proven charter platform supported by robust engineering, advanced systems, and a layout crafted for both relaxation and entertainment.







THIS IS IT
Tecnomar

Specifications

Length: 43.5m (142.7')

Beam: 14.5m (47.6')

Draft: 2.22m (7.3')

Flag: Malta

Location: Athens, Greece

Year Built/Refit: 2024 /

Builder: Tecnomar

Accommodations: 12 guests in 6 cabins

Crew: Up to 12 crew

Price: €46,000,000

General Information

Type: Motor -

Construction: Aluminium Hull and Superstructure

Interior Designer: The Italian Sea Group

Exterior Designer: The Italian Sea Group

Fuel Capacity: 53,600L / 14,160 US Gal

Water Capacity: 19,500L / 5,151 US Gal

Gross Tonnage: 750 Ton

Engines: 2, MTU, 16V 2000 M96L, 2600, Diesel

Cruising Speed: 15 knots

Max Speed: 17 knots

Range: 3,300 nm @ 15 knots

Classification: RINA

Description

Accommodation Overview:

Accommodation for 12 guests in 6 staterooms. 12 crew.

Owner

The Owner's suite occupies the Upper Deck, offering a double bed, private office area, walk-in dressing room, and a dramatic glass skylight that enhances the 3.3-meter headroom. A dedicated safety exit and a spacious ensuite bathroom with shower complete this refined retreat designed for privacy and comfort.

Guests

Two VIP cabins feature twin beds, wardrobes, bedside tables, and ensuite bathrooms. Two additional guest cabins on the Lower Deck mirror this layout, each equipped with twin beds, storage, safe boxes, and private ensuite facilities. A versatile playroom with a 50" TV and PlayStation can convert into an extra guest cabin when required.

Crew

Crew accommodations include a captain's cabin with double bed and safe, plus five twin-berth crew cabins, each with its own head. A dedicated crew mess, laundry area, and efficient service pathways ensure smooth operations and discreet service throughout the yacht.



Machinery Details

Main Engines:

- 2x MTU 16V2000 Mg6L (2,600 Hp / 1,939 kW),
- Engine Hours (January 2026): 964 hrs
- Gearboxes: 2x ZF 5350, i=5.040
- Propulsión: 2x FPP NiBrAl 5-blade

Other Machinery:

- Bow thruster: 2x OMS E-0400-V, 63 kW
- Steering: Hydraulic Power Pack OPEM Sistemi
- Fuel filters: Racor 900MAM
- Water systems: Idromar MC5 Duplex, Gianneschi pumps, Idrofast softener
- Hot water: 2x 300 L Inox boilers + circulating pumps
- Air conditioning: 2x PITZEN main units + Tecnavi fancoils

Generators

- 2x Caterpillar C7 150 kW
- Gen Hours: Port 1,950 hrs, Stbd 1,880 hrs
- Electricity: 12/24VDC – 230VAC, 400V 50Hz 3-phase
- Shore Power: Dual 400V 125A connections
- Batteries: Mastervolt engine (8), service/generator (16), MVG 12/200 emergency

Video

Communication & Navigation

CCTV

Fixed Cameras 6x Fixed Units

Motorized Cameras 5x Motorized Units

FLIR Camera 1x FLIR M232

Matrix Switch 1x Matrix Controller

Control Keyboard 1x Bridge Keyboard

Repeater Monitor 1x 15" Monitor

Security, Fire Fighting & Safety

Security

Safes Multiple Safe Boxes

Ring Buoys 4x Standard Rings

Line Throwing Appliance 3x Launchers

Air Horn 1x Handheld + Spare Cylinder

Fire Fighting

Portable Extinguishers Nx Multiple Units

Engine Room System 1x Fixed System

Smoke/Heat/Gas Detectors Nx Multiple Sensors

Ultra Fog System 1x High-pressure System

Pumps 1x Gianneschi ACB 631/B + 1x Emergency Pump

Safety

Inflatable Life Rafts 4x Rafts

Life Jackets Nx Multiple Units

Distress Signals Nx Full Set

Bilge Alarm 1x Alarm System

Medical Kit 1x Category A Kit

Separate Fire Room 1x Dedicated Room

Deck Equipment

Anchors 2x Danford Type 420 kg

Anchor Chains 160m 1x Chain Set

Windlasses 2x Maxwell Stainless Steel Electric

Warping Capstans 4x Stainless Steel Electric

Mooring Lines 8x Total 240 m

Searchlights 2x SANSHIN 24V

Side Boarding Ladder 1x Hydraulic Ladder

Electro-hydraulic Crane 1x 2000 kg SWL

Aft Hydraulic Platform 1x Hydromar System

Jacuzzi Pool 1x Whirlpool with Heater

Underwater Lights 18x OCEANLED

Garage Crane 1x Besenzoni 600 kg SWL

Portable Crane 1x HARKEN Carbon 600 kg SWL

Tender Refueling System 1x Gianneschi PE56

Tender & Toys

Jet Tender 1x Castoldi 18RB with Yanmar 230 Hp

Jetskis 2x Seadoo 330 Hp 3-seat

Sea Pool Corridor 1x Searaft Corridor

Double Jetski Dock 1x Searaft Dock

Leisure Dock 1x Searaft with Sea Pool Net

Sea Pool 1x 4 x 4.8 m; Seabobs 4x F5

South Dock 1x Searaft 5.8 x 2.0 x 0.2 m

Wakeboard 1x Jobe Vanity 131 + 1x Jobe Vanity 141

Efoil 1x Electric Foil Board

SUP 1x Stand-Up Paddleboard

Towable Binar 1x Inflatable

Towable Hotseat 1x Inflatable

Kneeboard 1x Standard Board

Inflatable Kayak 1x 2-Person

Seascooter 1x Jobe Seascooter

Entertainment Equipment

Audio System 1x Crestron Entertainment System with iPad Control

TV 1x Samsung 100"

TVs 5x Samsung 50" (Staterooms, Upper Deck, Playroom, Crew Mess)

TVs Nx Samsung Units in Crew Cabins

Domestic Equipment

Galley

Cooking Plates 2x 90 cm Units; Extractor Hood 1x Wolf UV

Ovens 2x KMN Professional 90 cm; Basin 1x Alpes Inox

Fryers 2x Professional Fryers; Fridge 1x Standard Fridge

Freezer 1x Standard Freezer; Macerator 1x Insinkerator

Food Pulverizer 1x Pulverizer Unit; Microwave 1x Miele

Icemaker 1x Hoshizaki

Dishwasher 1x Standard Dishwasher; Vacuum Sealer 1x Food Vacuum Sealer

Bar

Fridge 1x Miele K 9122 Ui; Icemaker 1x Indel Webasto Marine

Wine Coolers 2x Wine Coolers; Cigar Humidor 1x Humidor

Sundeck

Bar 1x Small Bar Set; Fridge 1x Fridge; Icemaker 1x Icemaker

Pantry

Basin 1x Alpes Inox VSR40; Cooking Plate 1x Miele KM6388

Extractor Hood 1x Wolf ICBPW362418; Fridge 1x Miele K37272 iD

Freezer 1x Miele Freezer; Microwave 1x Miele M6032SC

Icemaker 1x Hoshizaki; Coffee Machine 1x Coffee Machine

Crew Mess

Fridge 1x Bosch; Dishwasher 1x Bosch; Microwave 1x Miele

Dumbwaiter 1x Aliseo Sistemi (Galley/Pastry/Sundeck)

Laundry

Dryers 2x Miele Inox Professional

Washing Machines 2x Miele Inox Professional

BARNES
YACHTING



BARNES

YACHTING



THIS IS IT
I
VALLETTA

RESCORRE

BARNES
YACHTING







BARNES
YACHTING





BARNES
YACHTING

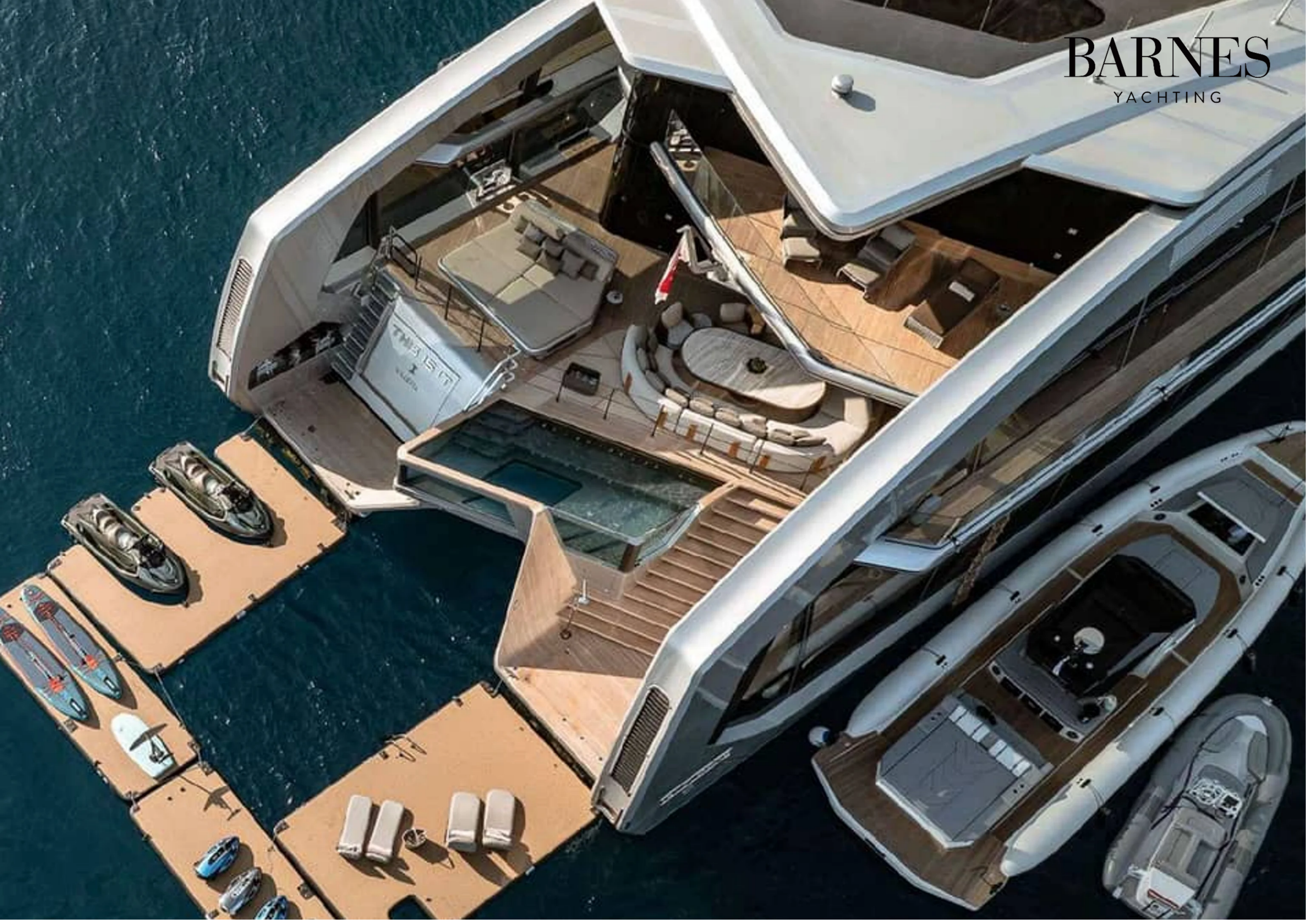








BARNES
YACHTING





**Vessel
Details**

Guide Price: €46.000.000

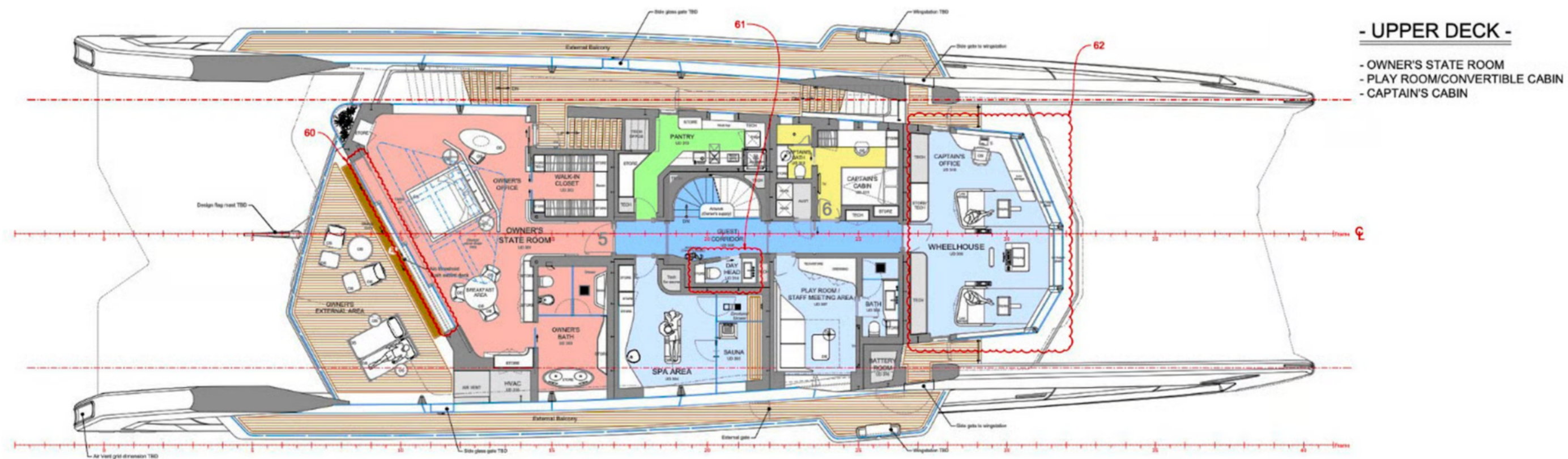
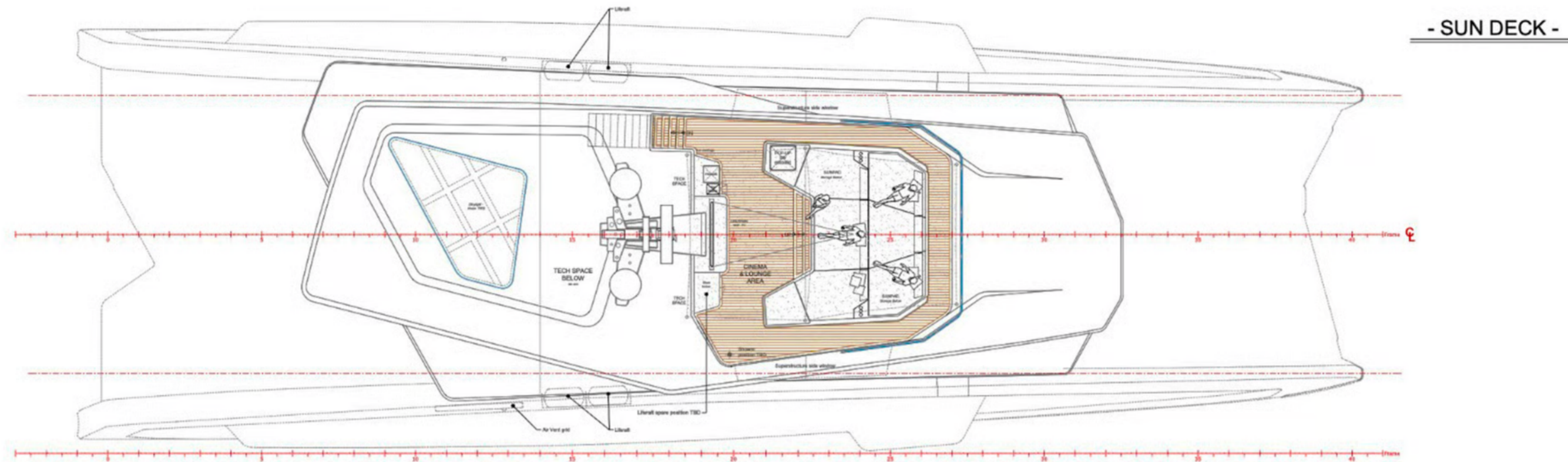
Length: 43.5m (142.7')

Built in: 2024

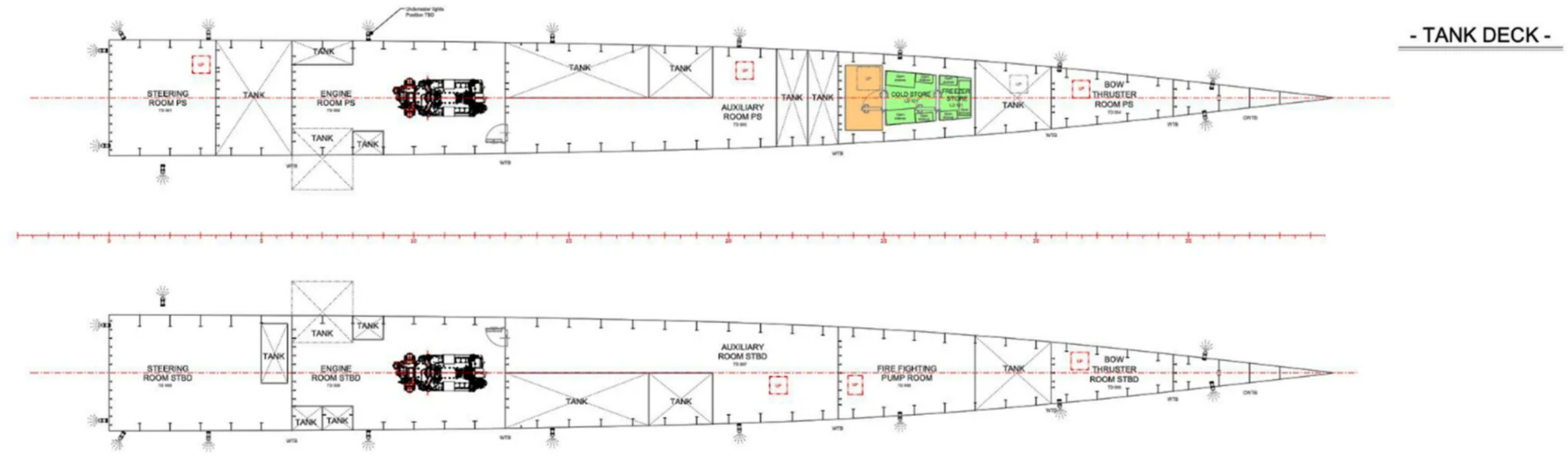
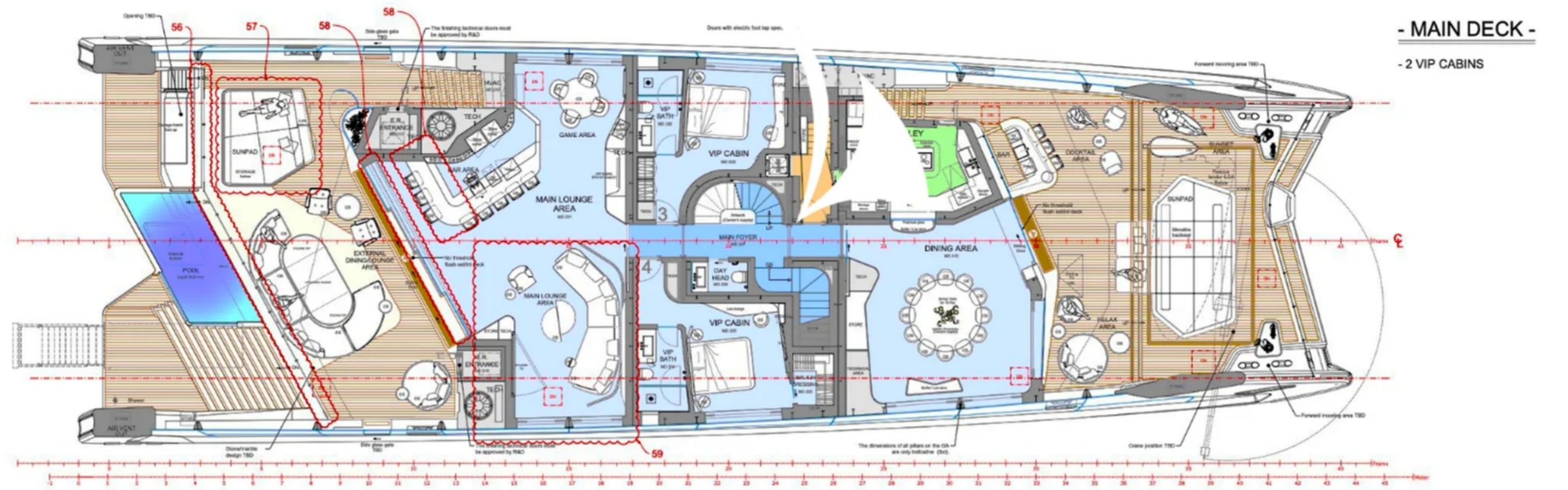
Lying: Athens, Greece

Crew: Up to 12

Flag: Malta



Disclaimer: These particulars have been prepared by Barnes Yachting from information provided by the sellers and are intended as a general guide to the vessel. Barnes Yachting cannot, however, be liable for any inaccuracy. It is up to the purchaser to confirm details of concern to him by survey, inspection and/or enquiry of the seller and to ensure that the purchase contract properly reflects his concern and specific details upon which he may rely. Barnes Yachting will always advise an independent survey.



BARNES
YACHTING



BARNES YACHTING

+34 634 81 37 95

Europe +44 20 4587 8777 / / USA +1 305 525 9301

yachting@barnes-international.com

www.barnes-yachting.com

