



STEP ONE
Amels

BARNES
YACHTING





STEP ONE Amels

Crafted Power for Global Exploration

STEP ONE embodies the strength, reliability, and sophistication expected from the acclaimed Amels 180 Limited Editions series. Built on a platform trusted by experienced global cruisers, she offers a rare combination of pedigree and readiness, shaped by meticulous private ownership and significant recent upgrades. Her comprehensive repaint and technical enhancements place her firmly in turnkey condition, eliminating uncertainty and ensuring confidence from the moment of acquisition.

Designed for owners who value true range and outdoor living, STEP ONE delivers exceptional versatility. Her expansive split-level sun deck stands among the most generous in her class, offering elevated privacy, panoramic views, and dedicated zones for dining, relaxation, and entertainment. With a touch-and-go helipad, beach club, steam room, and a well-equipped toy garage, she provides a lifestyle experience far beyond what is typically found in the 55m segment.

Inside, Laura Sessa Romboli's light-filled interiors create a welcoming atmosphere ideal for both family cruising and guest hospitality. Accommodation for up to 12 guests, paired with professional crew capacity, ensures seamless long-range operation. STEP ONE is a refined, capable, and intelligently upgraded yacht built for owners who expect more from every mile.







STEP ONE Amels

Specifications

Length: 55m (180.4')

Beam: 9m (29.5')

Draft: 3.35m (11')

Flag: Marshall Islands

Location: La Paz, Mexico

Year Built/Refit: 2012 / 2022

Builder: Amels

Accommodations: 12 guests in 5 cabins

Crew: Up to 14 crew

Price: \$31,700,000

Ex VAT

General Information

Type: Motor -

Construction: Steel Hull and Aluminium Superstructure

Interior Designer: Laura Sessa Romboli

Exterior Designer: Tim Heywood Design

Fuel Capacity: 115,000L / 30,380 US Gal

Water Capacity: 17,000L / 4,491 US Gal

Gross Tonnage: 672 Ton

Engines: 2, MTU, 16V 2000 M70, 1408, Diesel

Cruising Speed: 13 knots

Max Speed: 15 knots

Range: 4,500 nm @ 13 knots

Classification: +100A1 SSC Yacht Mono G6, Lloyd's, LMC, UMS

Description

Accommodation Overview:

Accommodation for 12 guests in 5 staterooms. 14 crew.

Owner

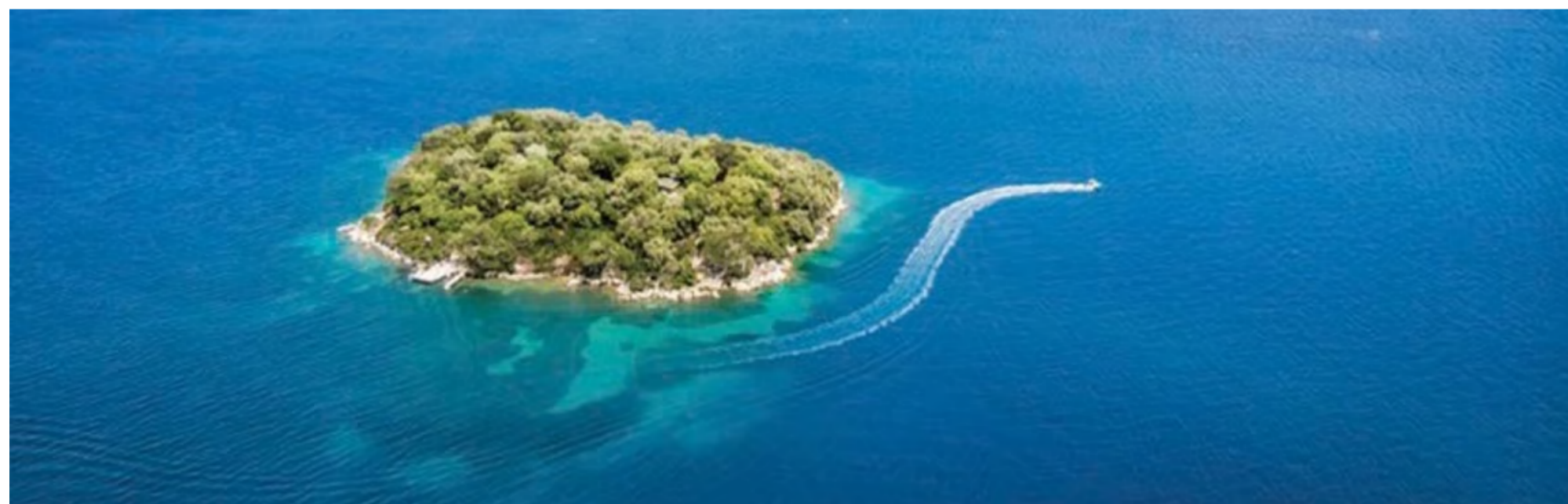
Full-width owner's suite forward on the main deck featuring a large walk-in wardrobe, dedicated study, en-suite bath and separate shower, and his-and-her basins; generous natural light and direct access to private deck areas create an intimate principal apartment tailored for extended cruising and private entertaining.

Guests

Five suites accommodate up to 12 guests across two double en-suite guest cabins plus additional cabins and Pullman berths noted for exceptional volume and privacy; public spaces include a spacious main saloon and multiple outdoor living zones, allowing flexible social configurations and comfortable guest circulation.

Crew

Crew accommodation for up to 14 is arranged in a combination of three double cabins and six twin-bunked cabins with dedicated service corridors, galley and technical spaces to ensure professional operation, rapid provisioning and discreet guest service while underway and at anchor.



Machinery Details

Main Engines:

2x MTU 16V 2000 M70 1,408Hp

Gearboxes: Reintjes type WAF741

Drive: Rolls Royce, Holland Roer Propeller 80 kW

Other Machinery:

Stabilizers: 2 x non-retractable active fin stabilisers, VT-Naiad

Air Conditioning: HVAC

Air Compressors: 1x KAESER EPC 544 lt/min @ 10 bar

Fuel Oil Separator: 1x WESTFALIA OTC--2, 1.15 m³/h

Fuel Oil Filter: 1x SEPAR SWK 2000/130/MK

Watermakers: 2 x IDROMAR IDM 7 (approx. 7,000 l per 24 hours @ 25°Celsius each)

Hot Water Boilers: 1x ETECH 15/HR 321/ 2 x 264 l

Sanitary Vacuum System: 2 x Jets 15 MB

Black Water Treatment: 1 x HAMANN mini L--rame 8100 l/day

Hydraulic Power Pack: 1 x van der Velden in the technical space aft (PS), serving passerelle, hatch, transom door, and transom door crane

Fore Deck Crane Power Pack: 1 x VAN DRIEL power pack installed in the fore peak.

Generators

-2 x 188 kW Northern Lights M1066H

-Emergency Generator: 1 x 80 kW Northern Lights M1066T

-Electricity: Alewijnse Electrical System

-Shore Power: Magnus 200A Frequency Converter and Transformer

-Batteries:

-General Service Batteries: 24DC 400Ah

-Radio Service Batteries: 24DC 200Ah

Communication and Navigation

Communication Systems:

Conning Station: 1 x Conning station

Satcom: 1 x SAILOR FBB-500

Inmarsat-C System: 2 x SAILOR TT-3000E

SSB Radio MF/HF: 1 x SAILOR 5000 radiotelephone

VHF Radiotelephones: 2 x VHF with DSC Sailor RT-5022

VSAT: WAVE CALL 4009 (SEATEL with DAC-2202 controller

406 MHz EPIRB: 1 x McMURDO E5 AIS, 1 x SAAB R4

Portable GMDSS VHF: 4 x McMURDO R2

Crew Intercom System: 1 x STENTO Pro 700

Telephone System: 1 x Panasonic KX-TDA 100 w/VOIP, shore, and SAT connection ops

Navigation Systems:

Radar Transponders: 2 x McMURDO S4

Radars: 1 x X-band ARPA radar + 2 x S-band ARPA radar

GPS: 2 x SAAB R4

NAVTEX Receiver: 1 x Furuno NX700-B with printer

Echo Sounders: 1 x Furuno FE-700 + 1 x FURUNO fish finding system FCV-1150

Gyro Compass: 1 x Anschutz Standard 22 Compact + 1 x repeaters Marathon DMS-250

Magnetic Compass: 1 x Cassens en Plath

Steering Control System: 1 x ANSCHUTZ PILOTSTAR-D

Wind Indication: 1 x Lambrecht Metco LCD w/sensor Quatro-IND SSAS

SSA Mini-C: 1 x SAILOR H3000M

Speed Log: 1 x CONSILIUM SAL R1a

ECDIS: 1 x Workstation w/RF keyboard and mouse, flush-mounted tracker ball console

Security, Fire Fighting & Safety

-Fire Fighting: Hi Fog automatic system, Consilium fire detection system

-Alarms: Alewijnse/Praxis

-Security: CCTV + security system on all points of entry

Deck Equipment

Black Spheres: 3x

Boarding Ladder: MARQUIP

Passerelle: CRAMM (Length 5.85m, width 0.55m)

Fenders: 10 x PVC inflatable with black fender socks (2xA7, 8xF11)

Anchors: 2 x galvanized steel HHP anchors 385 kg

Chains: 2 x 192.5 m, 22 mm galvanized, grade U2

Capstans: 2 x STEEN 59 size 48

Anchor Winch: 1 x STEEN 19 size

Tender & Toys

- Tender Limo: 2012 Yachtwerft Meyer Custom 6.7m Tender with Steyer 236 Marine Diesel Engine (236 bhp) with Bravo 1 stern drive unit – capacity 10 + 2 crew

- Rescue Boat: 2012 Pascoe 6.2m SOLAS with Steyer M40 Marine Diesel Engine (164 bhp) and Alamarine type 230 water jet

- Waverunners: 2 x Seadoo GTR215 (2012)

- Seabobs: 2 x Cayago F7 (2012)

- Aqua Glide: 1 x Rebound 16 trampoline with iBeam, small slide, and boarding attachments; 6 person Fiesta pool, Blast Bag

- Hover Board: Zapata Racing Hover Board with quick release attachments for Seadoo wave runners (supplied by Owners 2014 – to be confirmed)

- Stand Up Paddles: 3 x SUP (2 supplied by Owners – to be confirmed)

- Dive Equipment: 2 x ScubaPro SCUBA BCD and regulators, 1 x Bauer Junior II air compressor

- Critter Pool: Aqua Lux

Entertainment Equipment

- Entertainment: Lantic Yacht Systems
- SAT TV: SEATEL 5004E satellite antenna with controller DAC-2202
- TV/FM Antenna: 1 x MARK 20 CA (Omni directional)
- AM/FM Antenna: 1 x VPA30 AM-FM (Omni directional)
- Computer Systems: 1 x LAN -DELL
- Wi-Fi: PowerEdge R210 II Server and Wi-Fi throughout

Domestic Equipment

- Grill Plate: 1 x Gaggenau
- Built-in Oven: 1 x Kupperbusch
- Steam Oven: 1 x Hobart Foster
- Microwave: 1 x Hobart Foster
- Deep Fat Fryer: 1 x Gaggenau
- Waste Disposal: 1 x Hobart Foster
- Refrigerators: 2 x Hobart Foster
- Ice-Cube Maker: 1 x Hobart Foster
- Trash Compactor: 1 x Barco
- Hot Water Tap: 1 x Quooker
- Dishwasher: 1 x Miele
- Heat Lamps: 2 x APW

BARNES

YACHTING





BARNES
YACHTING















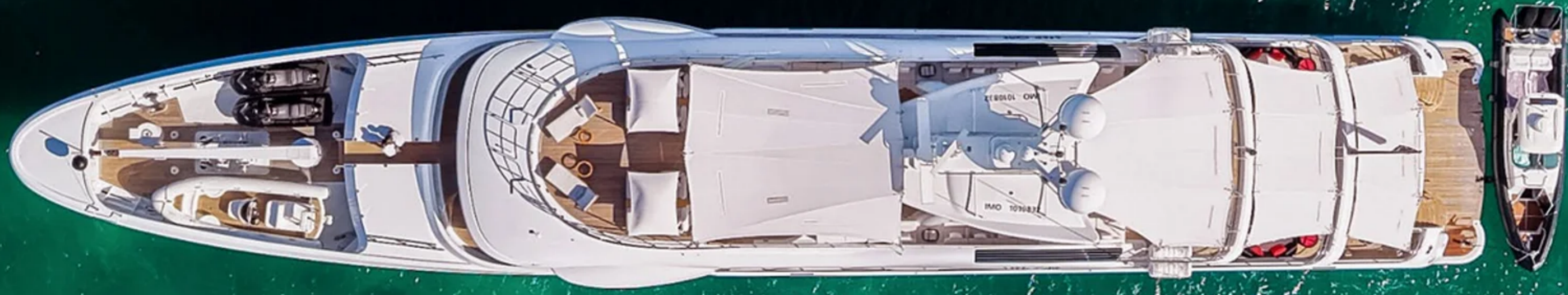




BARNES

YACHTING



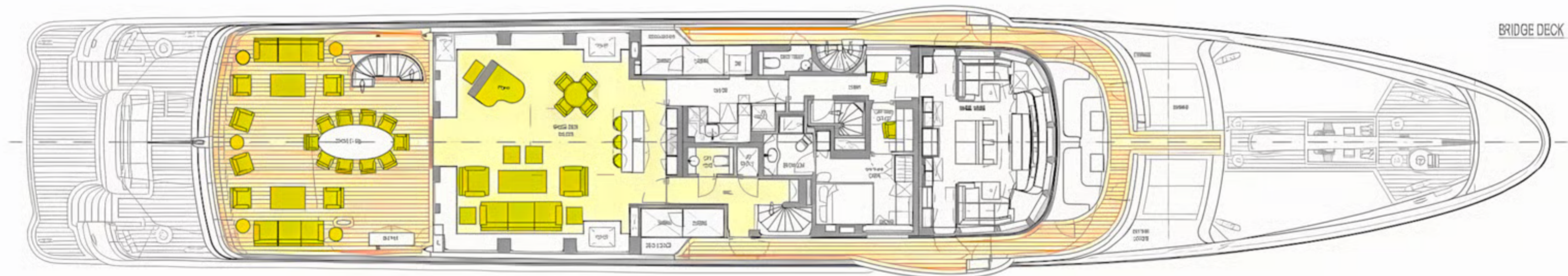
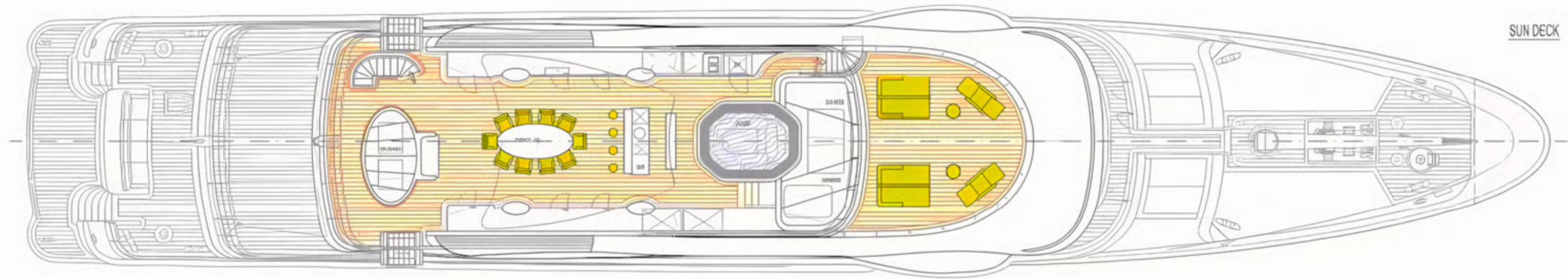


**Vessel
Details**

Guide Price: \$31.700.000
Length: 55m (180.4')

Built/Refit: 2012 / 2022
Lying: La Paz, Mexico

Crew: Up to 14
Flag: Marshall Islands



Disclaimer: These particulars have been prepared by Barnes Yachting from information provided by the sellers and are intended as a general guide to the vessel. Barnes Yachting cannot, however, be liable for any inaccuracy. It is up to the purchaser to confirm details of concern to him by survey, inspection and/or enquiry of the seller and to ensure that the purchase contract properly reflects his concern and specific details upon which he may rely. Barnes Yachting will always advise an independent survey.





BARNES YACHTING

+34 634 81 37 95

Europe +44 20 4587 8777 / / USA +1 305 525 9301

yachting@barnes-international.com

www.barnes-yachting.com

