



SUNSEEKER 28M  
Sunseeker

BARNES  
YACHTING





## SUNSEEKER 28M Sunseeker

### Sunseeker Performance & Comfort

Sunseeker 28M combines the proven pedigree of Sunseeker with a sleek GRP profile and performance to match. Built in 2015, this 28.17-metre yacht pairs strong exterior presence with a practical onboard arrangement of four cabins and eight beds, creating a compelling platform for private cruising, family use, or entertaining in comfort with assured style underway across diverse seasonal cruising plans.

Twin MTU 12V 2000 M94 engines rated at 1950 HP deliver a reported maximum speed of 29 knots and a cruising speed of 23 knots. Simrad navigation electronics, including chart plotter, radar, auto pilot, VHF, echo sounder, and log, support confident passage-making with a well-equipped operational setup at sea alongside AIS, compass, and rudder angle indicator for added capability aboard.

On deck and inside, the inventory reflects versatile enjoyment and day-to-day convenience, with hydraulic platform, passarelle, swimming ladder, bow thruster, stern thruster, reverse-cycle air conditioning, televisions in the salon and every cabin, American-style galley refrigeration, wine cabinet, dishwasher, microwave, and dual icemakers. This is a capable, well-specified Sunseeker package for owners seeking comfort, equipment depth, and proven cruising appeal today.





BARNES  
YACHTING





# SUNSEEKER 28M

## Sunseeker

### Specifications

**Length:** 28.17m (92.4')

**Beam:** 6.5m (21.3')

**Draft:** 1.98m (6.5')

**Flag:** Saint Vincent and the Grenadines

**Location:** La Spezia, Italy

**Year Built:** 2015

**Builder:** Sunseeker

**Accommodations:** 8 guests in 4 cabins

**Crew:** Up to 4

**Price:** €3.650.000

### General Information

**Type:** Motor

**Construction:** GRP Hull and Superstructure

**Interior Designer:** -

**Exterior Designer:** -

**Fuel Capacity:** 9,000L / 2,378 US Gal

**Water Capacity:** 1,500L / 396 US Gal

**Gross Tonnage:** 95 Ton

**Engines:** 2, MTU, 12V 2000 M94, 1950, Diesel

**Cruising Speed:** 23 knots

**Max Speed:** 29 knots

**Range:** 450 nm @ 23 knots

**Classification:** -

## Description

### *Accommodation Overview:*

Accommodation for 8 guests in 4 staterooms. 4 crew.

#### **Owner**

Within the four-cabin layout, the accommodation arrangement supports an elegant private stay aboard. Eight beds are specified in total, and televisions are fitted in the salon and every cabin, extending onboard comfort throughout the interior. The overall setup reflects a practical, well-equipped environment for extended cruising and relaxed time aboard.

#### **Guests**

Guest accommodation follows the clearly stated configuration of four cabins and eight beds, offering a balanced arrangement for family cruising or entertaining. Televisions in every cabin add convenience, while the salon entertainment setup supports social time onboard. The result is a guest experience shaped by the explicitly listed amenities aboard.

#### **Crew**

Crew operations are supported by twin engines, Kohler generators, bow and stern thrusters, reverse hot/cold air conditioning, hydraulic platform, passarelle, anchor windlass, and the main control and monitoring panel. Together with stern capstan winches and fairleads, these listed features support practical service, handling, and day-to-day management aboard for crew.

## Machinery Details

### *Main Engines:*

2x MTU 12V 2000 M94 - 1,950 Hp  
2676 h sx - 2692 h dx

### *Other Machinery:*

Bow thruster  
Stern thruster  
Airconditioning: reverse hot/cold

### **Generators:**

Kohler  
4810 h sx - 4856 h dx



## Communication & Navigation

### *Communication Equipment*

Simrad VHF

### *Navigation Equipment*

Simrad chart plotter

Simrad radar

Simrad auto pilot

AIS

Simrad echo sounder

Compass

Rudder angle indicator

Simrad log

## Deck Equipment

Hydraulic platform

Single electric windlass 24

Anchor chain 138 meter, 12mm diameter, galvanised

Passarelle/Gangway

Swimming ladder

2x upholstered helm seats with electric operation

Remote spotlight control

Main control and monitoring panel (AC/DC) with generators control

2x stern capstan winches 24v and fairleads

Teak dining tables with stainless steel pedestal

## Entertainment Equipment

Televisions in salon and every cabin

Blu-ray/CD/radio surround system with two speakers and sub-woofer

## Domestic Equipment

Fridge in wetbar unit

American style fridge/freezer in galley

Freezers in galley

Wine cabinet

Slimline dishwasher

Microwave in galley

Icemaker in wetbar unit

Ice maker in galley



**BARNES**  
YACHTING



















**BARNES**  
YACHTING



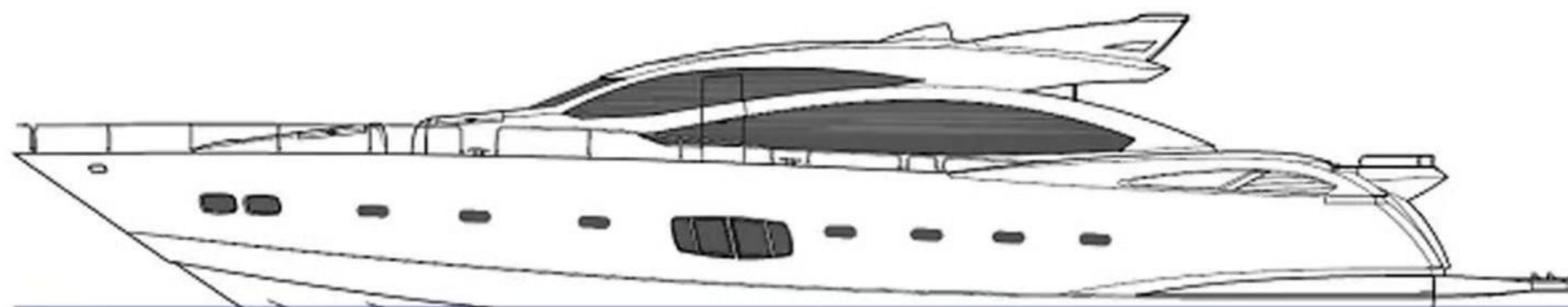


Vessel  
Details

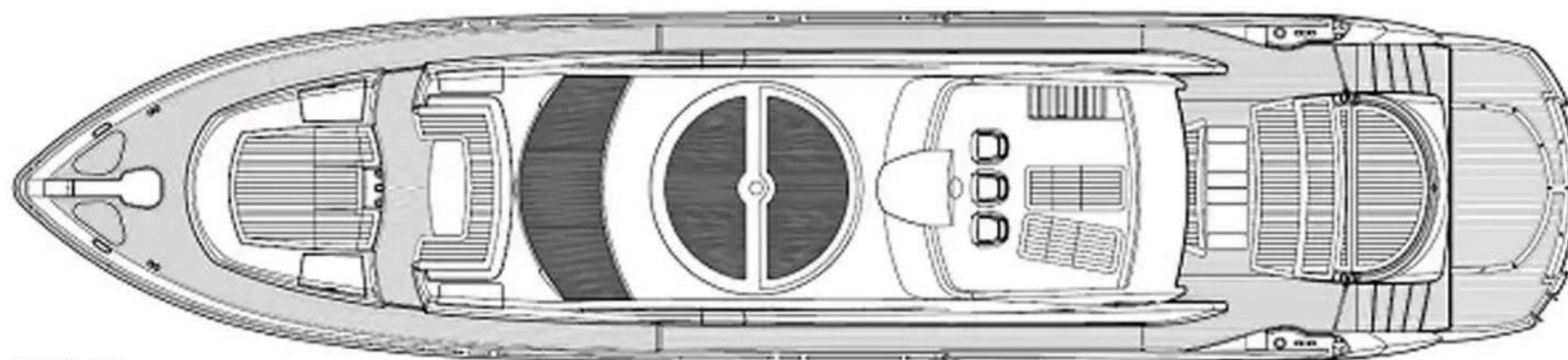
Guide Price: €3,650,000  
Length: 28.17m (92.4')

Built in: 2015  
Lying: La Spezia, Italy

Crew: Up to 4  
Flag: Saint Vincent and the Grenadines

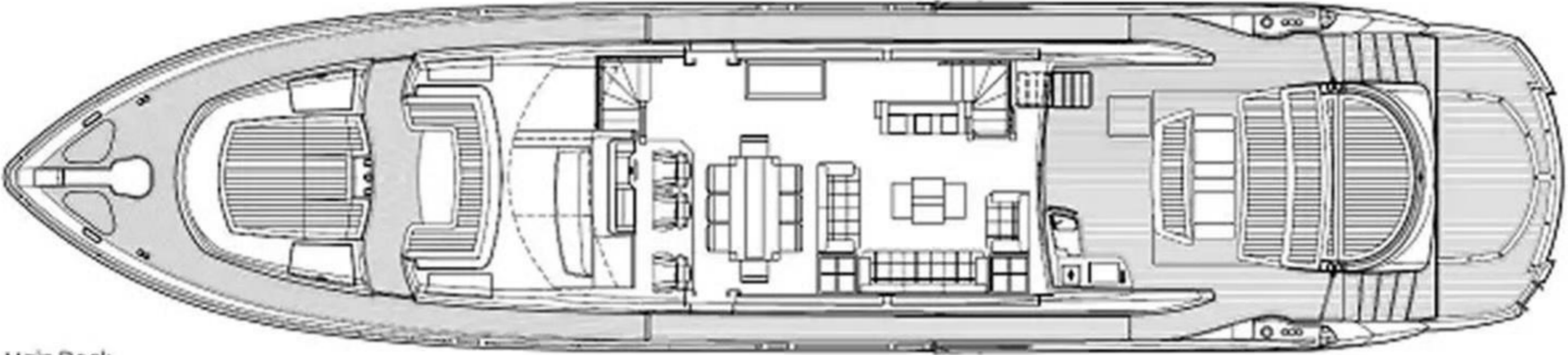


Profile



Exterior Plan

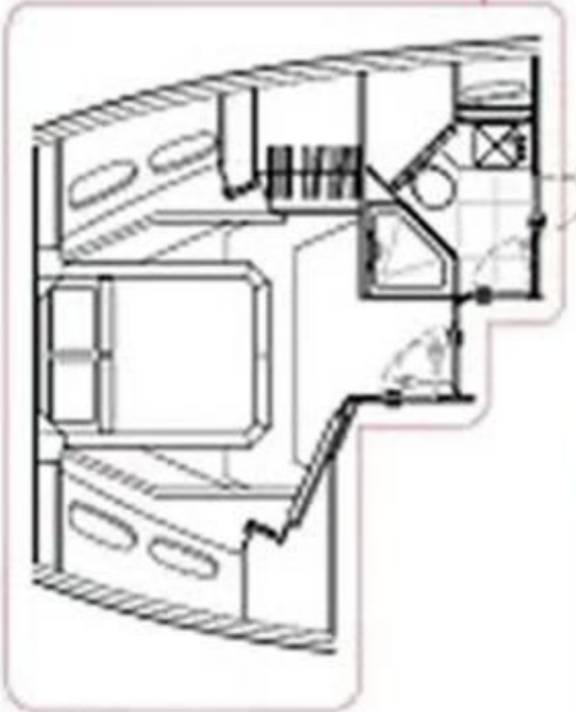
*Disclaimer: These particulars have been prepared by Barnes Yachting from information provided by the sellers and are intended as a general guide to the vessel. Barnes Yachting cannot, however, be liable for any inaccuracy. It is up to the purchaser to confirm details of concern to him by survey, inspection and/or enquiry of the seller and to ensure that the purchase contract properly reflects his concern and specific details upon which he may rely. Barnes Yachting will always advise an independent survey.*



Main Deck



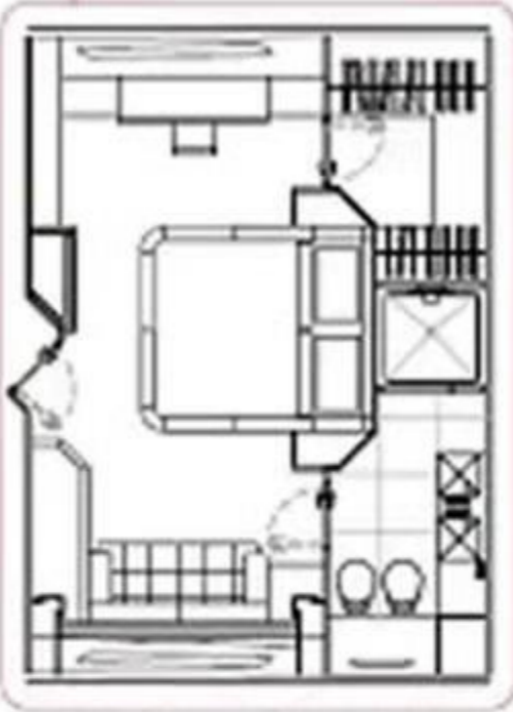
Lower Deck



Optional Day Head Layout



Optional Port Pulpit & Integrated Ladder Layout



Optional Water Stowage Cabinet Layout



Optional Crew/Galley Layout

BARNES  
YACHTING



**BARNES YACHTING**

+34 634 81 37 95

Europe +44 20 4587 8777 / / USA +1 305 525 9301

[yachting@barnes-international.com](mailto:yachting@barnes-international.com)

[www.barnes-yachting.com](http://www.barnes-yachting.com)

