



SANTA ANNA B
Sanlorenzo

BARNES
YACHTING





SANTA ANNA B Sanlorenzo

Sanlorenzo SD122 Performance & Style

Sanlorenzo SD122 Santa Anna B represents a refined balance of engineering precision and sophisticated design, built in 2011 by Sanlorenzo. With a displacement GRP hull and superstructure, she delivers reliable performance paired with an elegant exterior and interior styling by Francesco Paszkowski. Her proportions and configuration position her as a compelling option within the 35-40-meter segment.

Powered by twin CAT C32 engines, she achieves a top speed of 18 knots and a comfortable cruising speed of 14 knots. Her technical platform is supported by straight shaft propulsion and robust onboard systems, ensuring consistent performance across extended passages. With a cruising range of 3,000 nautical miles, she is engineered for both coastal and longer-range navigation.

Her layout is designed to maximize onboard enjoyment, offering expansive deck areas including a flybridge with jacuzzi, bar, and sunbathing spaces. Interior volumes are complemented by well-appointed social areas, creating an environment suited for both private use and entertaining, supported by dedicated crew accommodations.







SANTA ANNA B

Sanlorenzo

Specifications

Length: 37.44m (122.8')

Beam: 7.54m (24.7')

Draft: 2m (6.6')

Flag: Croatia

Location: Bodrum, Turkey

Year Built: 2011

Builder: Sanlorenzo

Accommodations: 10 guests in 5 cabins

Crew: Up to 7

Price: POA

General Information

Type: Motor

Construction: GRP Hull and Superstructure

Interior Designer: Francesco Paszkowski

Exterior Designer: Francesco Paszkowski

Fuel Capacity: 35.000L / 9.246 US Gal

Water Capacity: 6.000L / 1.585 US Gal

Gross Tonnage: 308 Ton

Engines: 2, Caterpillar, C32, 1670, Diesel

Cruising Speed: 14 knots

Max Speed: 18 knots

Range: 3.000 nm @ 14 knots

Classification: RINA

Description

Accommodation Overview:

Accommodation for 10 guests in 5 staterooms. 7 crew.

Owner

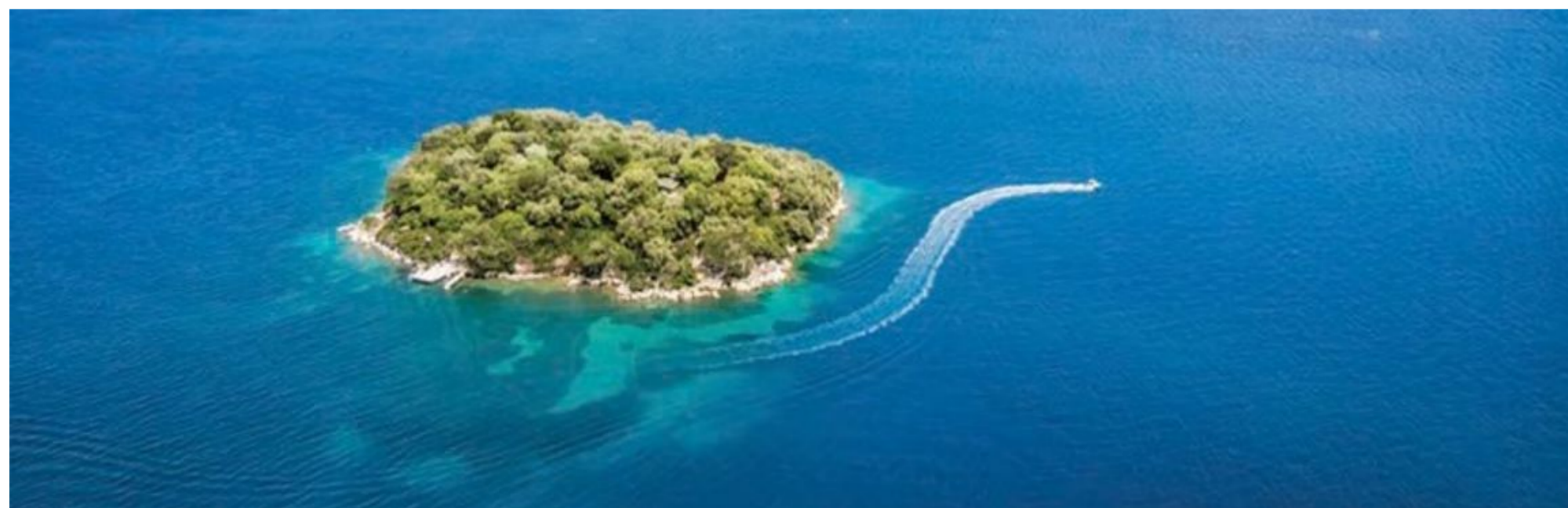
The Owner's suite is positioned on the main deck, offering privacy and comfortable proportions. This full-beam suite is designed to deliver a refined onboard experience, enhanced by elegant finishes and a jacuzzi within the stateroom. Natural light and direct integration with the main deck flow create a balanced and comfortable private retreat.

Guests

Santa Anna B accommodates up to 10 guests in total, including the Owner in the Master suite. The remaining accommodation is arranged across 2 Double and 2 Twin cabins, providing a well-balanced layout for guest distribution. Each cabin is designed to ensure comfort and privacy, supporting both family cruising and social use while maintaining separation between guest areas.

Crew

She is capable of carrying up to 7 crew in 4 cabins to ensure a relaxed luxury yacht experience. The crew layout supports efficient onboard operations, with dedicated service areas and a Captain's cabin located on the upper deck, allowing clear command positioning and functional separation from guest spaces.



Machinery Details

Main Engines:

2x CAT C32 1,670 Hp / 1,245 kW
Propulsion Straight shafts
Propellers 2x 5 blade NiBrAl

Other Machinery:

NAID zero speed stabilizers
Water systems 6,000 L capacity
Fuel systems 35,000 L capacity

Generators

2x 70 kW

Tenders & Toys

New inventory of toys

Yamaha Jet Ski

1x Seabob; 2x Stand Up Paddles

Fishing Rods and Equipment

Water Skis

Water inflatable tubes

Masks and Fins assortment

2x Diving Sets with compressor

2x Folding Bicycles; 3x Electric Scooters

2x Segways

Domestic Equipment

2x BBQs; Spare Stove; Meile Stove

Microwave Oven

2x Refrigerators; 1x Freezer; Ice maker

Kitchen utensils

Dishwasher

BARNES
YACHTING



BARNES
YACHTING



BARNES

YACHTING







BARNES

YACHTING





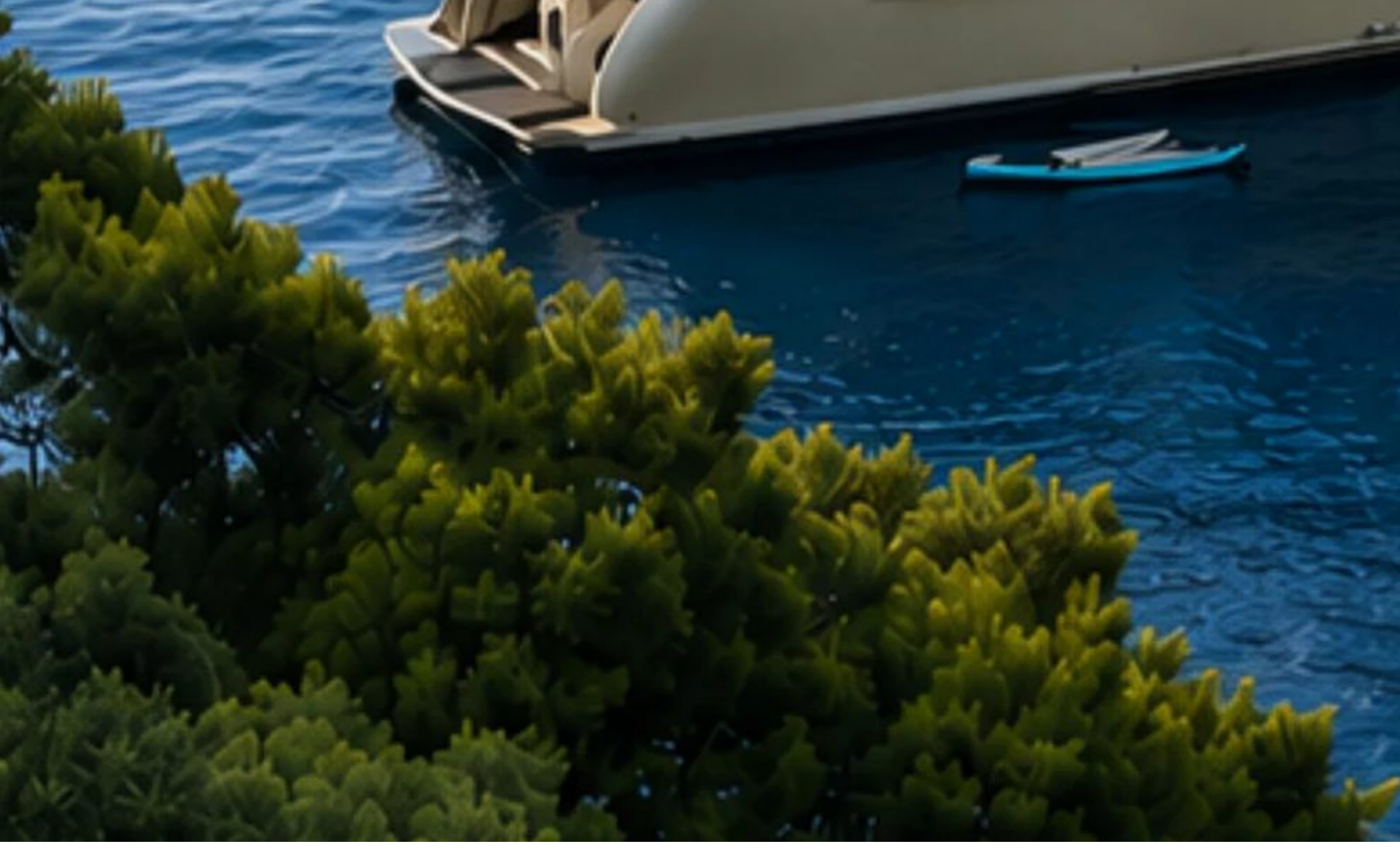






BARNES

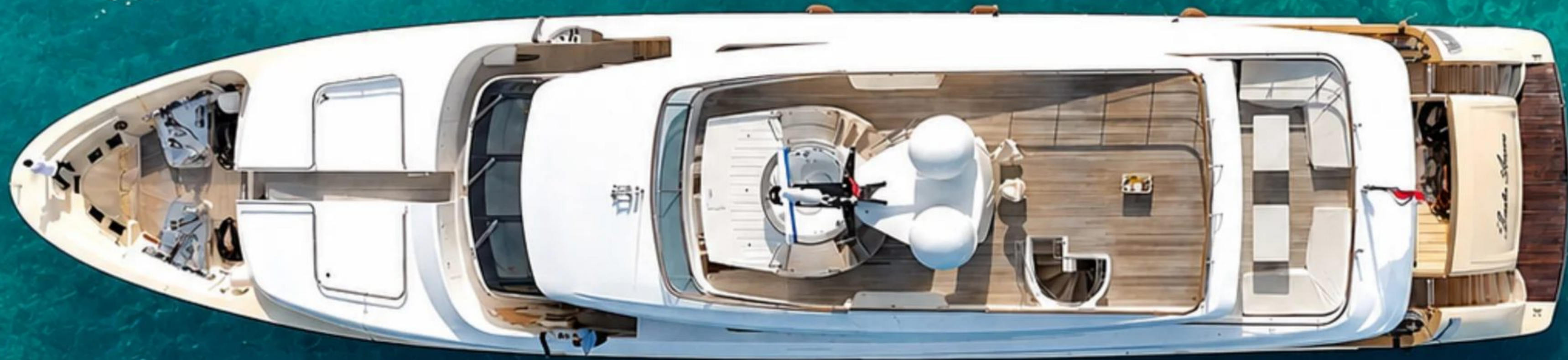
YACHTING



BARNES

YACHTING





**Vessel
Details**

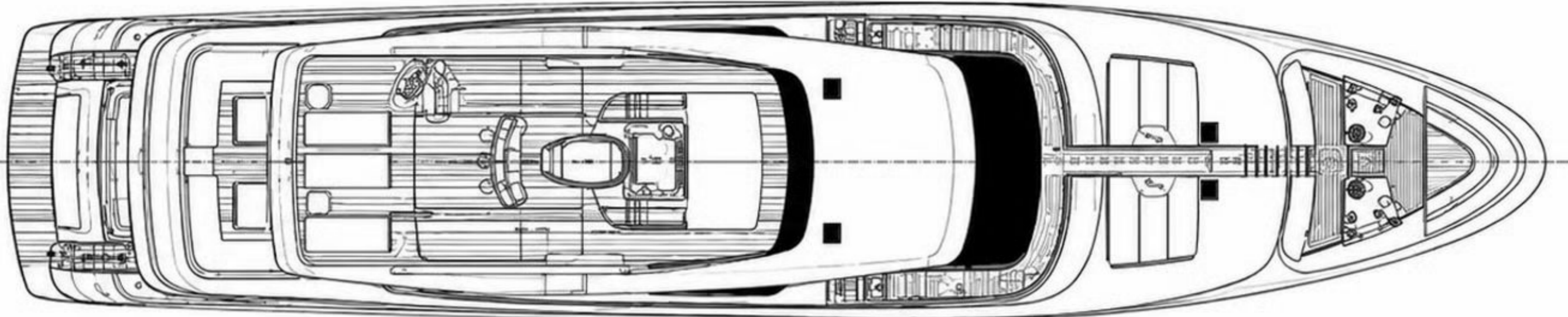
Guide Price: POA
Length: 37.44m (122.8')

Built in: 2011
Lying: Bodrum, Turkey

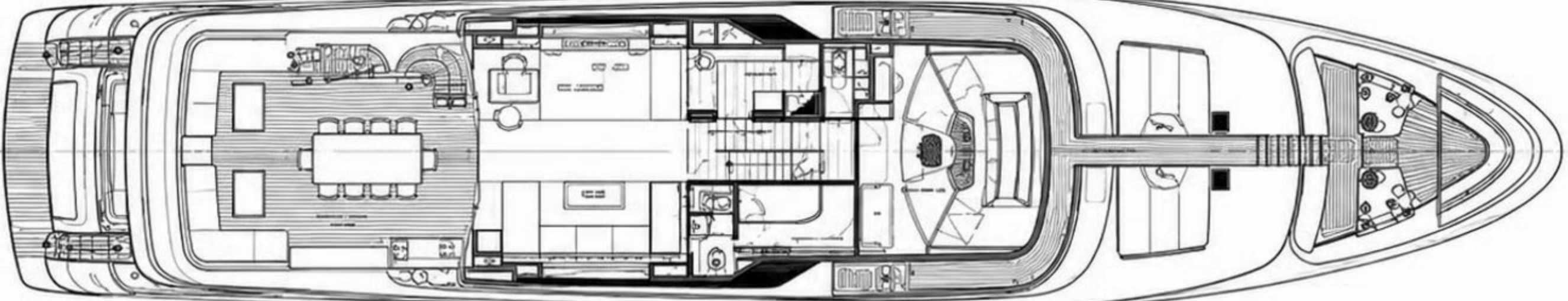
Crew: Up to 7
Flag: Croatia

Disclaimer: These particulars have been prepared by Barnes Yachting from information provided by the sellers and are intended as a general guide to the vessel. Barnes Yachting cannot, however, be liable for any inaccuracy. It is up to the purchaser to confirm details of concern to him by survey, inspection and/or enquiry of the seller and to ensure that the purchase contract properly reflects his concern and specific details upon which he may rely. Barnes Yachting will always advise an independent survey.

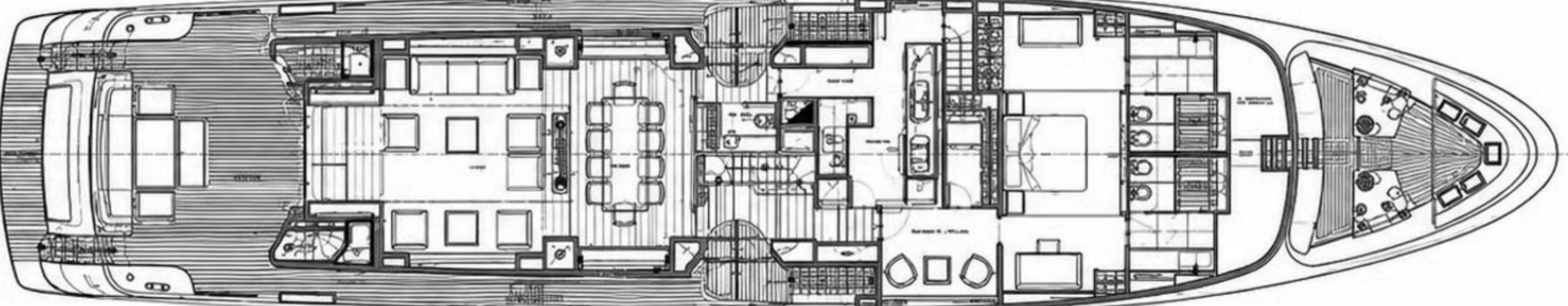
Fly Bridge



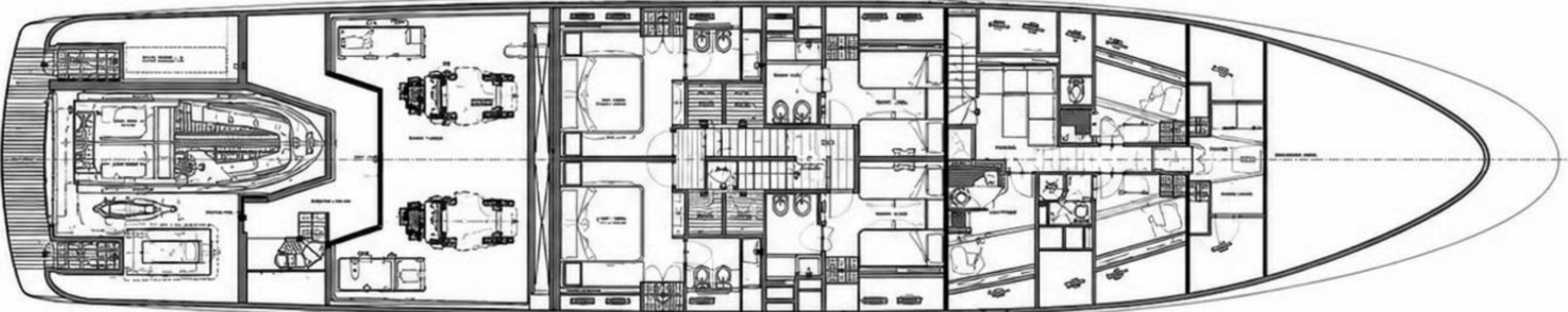
Upper Deck



Main Deck



Lower Deck



BARNES
YACHTING



BARNES YACHTING

+34 634 81 37 95

Europe +44 20 4587 8777 / / USA +1 305 525 9301

yachting@barnes-international.com

www.barnes-yachting.com

Santa Ann

