



NAOS
CCYD

BARNES
YACHTING





NAOS
CCYD

Ultimate Yachting Experience Awaits You

Welcome to the world of luxury and elegance with "NAOS", a classic yacht built in 1992 by CCYD.

This magnificent vessel, recently refitted in 2022, is a testament to exquisite craftsmanship and timeless design.

Nestled in the beautiful waters of Vilanova i la Geltru, Catalonia, Spain, NAOS is a blend of comfort and performance.

With an aluminum hull designed by Ron Holland and interiors by Andrew Winch, she offers a unique sailing experience.

Accommodating six guests and four crew members, NAOS is perfect for those seeking an exclusive maritime adventure.

Experience the thrill of cruising at 10 knots, with the promise of unmatched luxury and sophistication.

Welcome aboard NAOS, your dream yacht awaits.





BARNES
YACHTING



Naos



**NAOS
CCYD**

Specifications

Length: 32.38m (106.2')

Beam: 7.24m (23.7')

Draft: 3.8m (12.5')

Flag: BVI – White Bay

Location: Vilanova i la Geltru, Catalonia, Spain

Year Built/Refit: 1992 / 2022

Builder: CCYD

Accommodations: 6 guests in 3 cabins

Crew: Up to 4 crew

Price: POA

General Information

Type: Sail

Construction: Aluminum Hull and Superstructure

Interior Designer: Winch Design

Exterior Designer: Ron Holland Design

Fuel Capacity: 10.000L / 2.642 US Gal

Water Capacity: 6.000L / 1.585 US Gal

Gross Tonnage: 98 Ton

Engines: 1, MTU, 12V 183 AA91, 738, Diesel

Cruising Speed: 10 knots

Max Speed: 11 knots

Range: -

Classification: -

Description

Accommodation Overview:

Accommodation for 6 guests in 3 staterooms. 4 crew.

Owner:

Indulge in luxury and comfort in the owner's quarters aboard Naos. This private retreat offers a spacious and elegantly designed space for relaxation and rejuvenation.

Guest:

Treat your guests to a lavish experience in the beautifully appointed guest cabins of Naos. With accommodations for up to six guests, each room exudes comfort and style.

Crew:

The dedicated crew quarters on Naos provide a comfortable and functional space for the onboard staff. With berths for four crew members, the crew area ensures efficient operations and seamless service



Machinery Details

Main Engines:

1x MTU 12V183Ag1 Diesel 738 HP

Engine Propulsion Type: Single feathering prop

Engine Serial Number: 424.900-003--12728

Engine Year: 1991

Other Machinery:

Bow Thruster: Yes

Cockpit: Yes

Generators

-2 x 188 kW Northern Lights M1066H

Emergency Generator: 1 x 80 kW Northern Lights M1066T

Electricity: Alewijnse Electrical System

Shore Power: Magnus 200A Frequency Converter and Transformer

Batteries:

-General Service Batteries: 24DC 400Ah

-Radio Service Batteries: 24DC 200Ah

Communication and Navigation

Communication Systems:

Conning Station: 1 x Conning station
Satcom: 1 x SAILOR FBB500
InmarsatC System: 2 x SAILOR TT3000E
SSB Radio MF/HF: 1 x SAILOR 5000 radiotelephone
VHF Radiotelephones: 2 x VHF with DSC Sailor RT5022
VSAT: WAVE CALL 400g (SEATEL with DAC2202 controller)
406 MHz EPIRB: 1 x McMURDO E5 AIS, 1 x SAAB R4
Portable GMDSS VHF: 4 x McMURDO R2
Crew Intercom System: 1 x STENTO Pro 700
Telephone System: 1 x Panasonic KXTDA 100 with VOIP, shore, and SAT connection options

Navigation Systems:

Radar Transponders: 2 x McMURDO S4
Radars: 1 x Xband ARPA radar, 2 x Sband ARPA radar
GPS: 2 x SAAB R4
NAVTEX Receiver: 1 x Furuno NX700B with printer
Echo Sounders: 1 x echo sounder Furuno FE700, 1 x FURUNO fish finding system CV1150
Gyro Compass: 1 x Anschutz Standard 22 Compact, 1 x digital repeaters Marathon DMS250

Security, Fire Fighting & Safety

Fire Fighting: Hi Fog automatic system, Consilium fire detection system
Alarms: Alewijnse/Praxis
Security: CCTV + security system on all points of entry

Deck Equipment

Black Spheres: 3x
Boarding Ladder: MARQUIP
Passerelle: CRAMM (Length 5.85m, width 0.55m)
Fenders: 10 x PVC inflatable with black fender socks (2xA7, 8xF11)
Anchors: 2 x galvanized steel HHP anchors 385 kg
Chains: 2 x 192.5 m, 22 mm galvanized, grade U2
Capstans: 2 x STEEN 59 size 48
Anchor Winch: 1 x STEEN 19 size

Tenders & Toys:

Tender Limo: 2012 Yachtwerft Meyer Custom 6.7m Tender with Steyer 236 Marine Diesel Engine(236 bhp) with Bravo 1 stern drive unit – capacity 10 + 2 crew
RescueBoat: 2012 Pascoe6.2m
SOLAS with Steyer M40 Marine Diesel Engine (164 bhp) and Alamarinetype 230 water jet
Waverunners: 2 x SeadooGTR215 (2012)
Seabobs: 2 x CayagoF7 (2012)
Aqua Glide: 1 x Rebound 16 trampoline with iBeam, small slide, and boarding attachments; 6 person Fiesta pool, Blast Bag
Hover Board: Zapata Racing Hover
Board with quick release attachments for Seadoowave runners (supplied by Owners 2014 –to be confirmed)
Stand Up Paddles: 3 x SUP (2 supplied by Owners –to be confirmed)
Dive Equipment: 2 x ScubaPro SCUBA BCD and regulators, 1 x Bauer Junior II air compressor
Critter Pool: Aqua Lux

Entertainment Equipment

Entertainment: Lantic Yacht Systems

SAT TV: SEATEL 5004E satellite antenna with controller DAC2202

TV/FM Antenna: 1 x MARK 20 CA (Omni directional)

AM/FM Antenna: 1 x VPA30 AMFM (Omni directional)

Computer Systems: 1 x LAN -DELL

WiFi: PowerEdge R210 II Server and WiFi throughout

Domestic Equipment

Grill Plate: 1 x Gaggenau

Built-in Oven: 1 x Kupperbusch

Steam Oven: 1 x Hobart Foster

Microwave: 1 x Hobart Foster

Deep Fat Fryer: 1 x Gaggenau

Waste Disposal: 1 x Hobart Foster

Refrigerators: 2 x Hobart Foster

IceCube Maker: 1 x Hobart Foster

TrashCompactor: 1 x Barco

Hot WaterTap: 1 x Quooker

Dishwasher: 1 x Miele

HeatLamps: 2 x APW

Comments

Vessel Condition: Used

Builder: CCYD Vessel Type: Sail Build Year: 1992

Main Category: Cruising Yacht

Model: CCYD106

Sub-category: Ocean Going

Production Type: Custom

Refit Year: 2022

Refit Type: Full

BARNES

YACHTING















BARNES
YACHTING





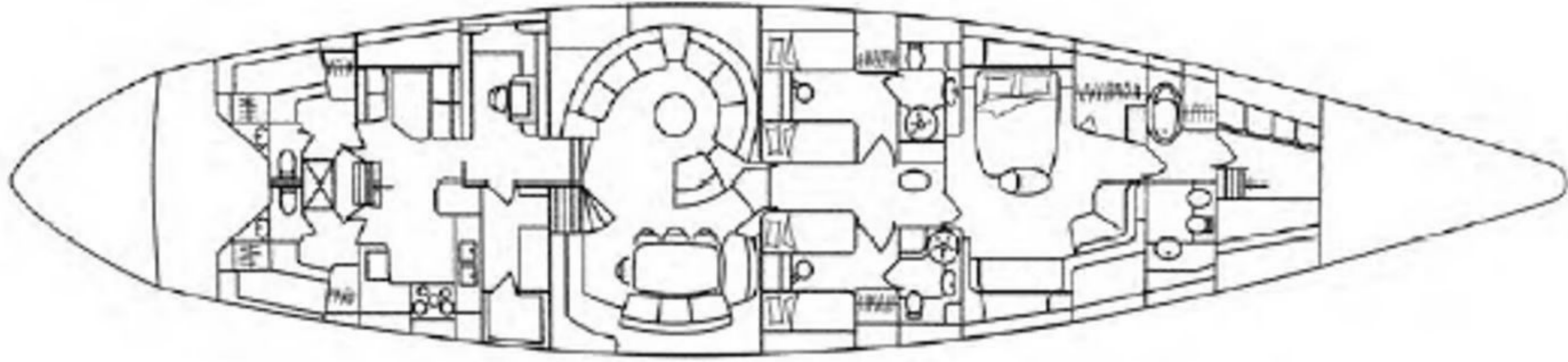
**Vessel
Details**

Guide Price: POA
Length: 32.38m (106.2')

Built/Refit: 1992 / 2022
Lying: Vilanova i la Geltru, Catalonia, Spain

Crew: Up to 4
Flag: BVI – White Bay

Disclaimer: These particulars have been prepared by Barnes Yachting from information provided by the sellers and are intended as a general guide to the vessel. Barnes Yachting cannot, however, be liable for any inaccuracy. It is up to the purchaser to confirm details of concern to him by survey, inspection and/or enquiry of the seller and to ensure that the purchase contract properly reflects his concern and specific details upon which he may rely. Barnes Yachting will always advise an independent survey.



BARNES
YACHTING



BARNES YACHTING

+34 634 81 37 95

Europe +44 20 4587 8777 / / USA +1 305 525 9301

yachting@barnes-international.com

www.barnes-yachting.com

