



AZIMUT S10
Azimut

BARNES
YACHTING





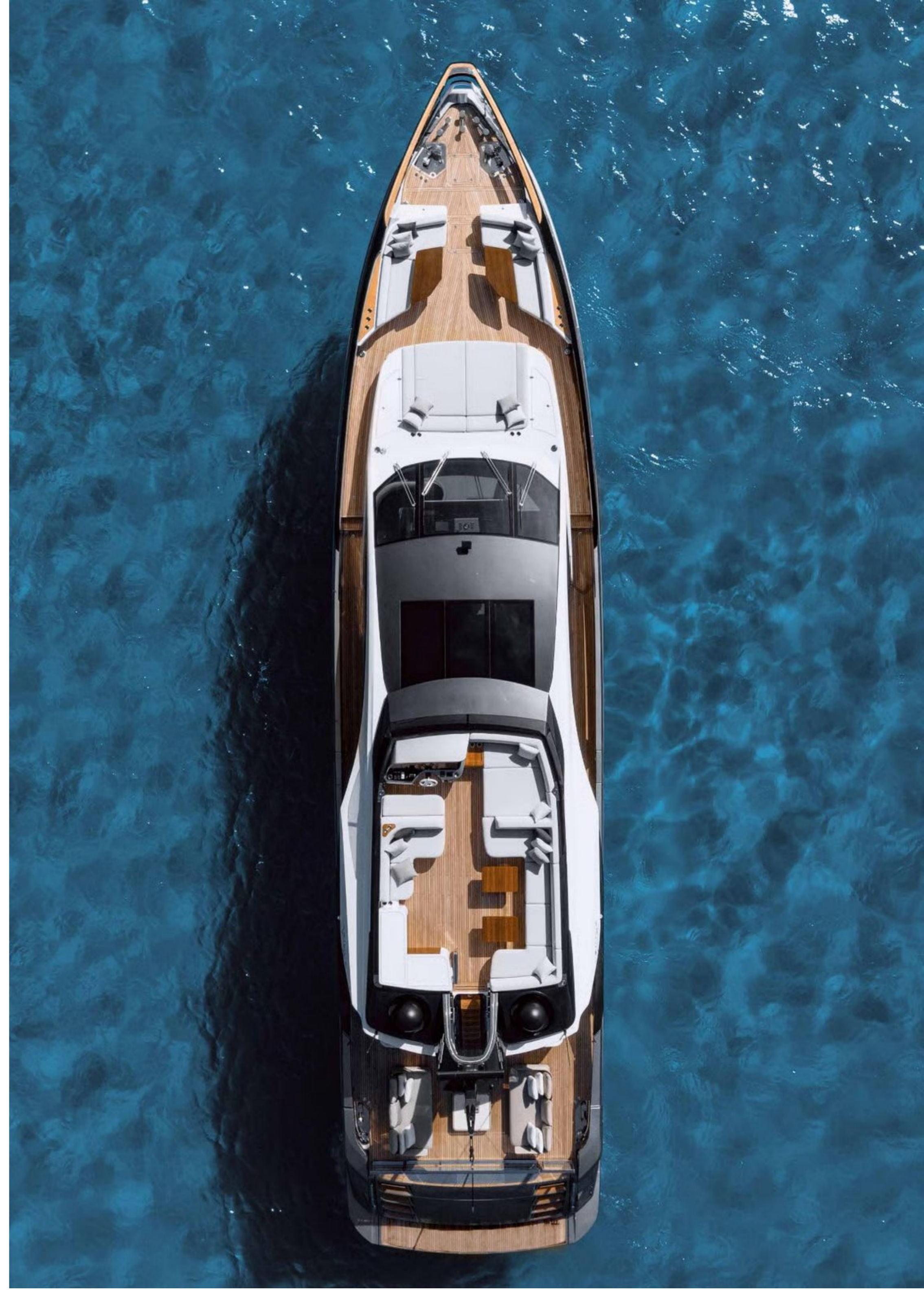
AZIMUT S10 Azimut

Dayboat Performance Elite

Built in 2022, this Azimut S10 combines sleek modern profile, fiberglass construction, and performance-led specification in a 28.7-meter platform. Powered by twin MTU 16V 2000M96L engines delivering 2,600 HP each, she reaches 36 knots and cruises at 28 knots. The package is further enhanced by Sea keeper 35 stabilization and a highly specified options list that supports owner appeal.

Privately used as a dayboat since launch, the yacht stands out for low engine hours, and an equipment inventory shaped around comfort, usability, and entertaining. Shore power, watermaker, air conditioning, premium entertainment systems, and extensive exterior amenities all contribute to a yacht configured for immediate enjoyment. Paint under warranty being completed in 2025 adds another notable point within the documented specification.

Accommodation is arranged for 8 guests in 4 cabins, supported by quarters for 4 crew in 2 cabins. Across the main deck, lower deck, flybridge, cockpit, and beach club areas, the specification reflects a balance of style, technical substance, and practical detail. For buyers seeking a thoroughly equipped Azimut S10 with strong documented features, this example presents a compelling market proposition.







AZIMUT S10

Azimut

Specifications

Length: 28.7m (94.1')

Beam: 6.3m (20.7')

Draft: 2.03m (6.7')

Flag: Australia

Location: Imperia, Italy

Year Built: 2022

Builder: Azimut

Accommodations: 8 guests in 4 cabins

Crew: Up to 4

Price: €4.950.000

General Information

Type: Motor

Construction: GRP Hull and Superstructure

Interior Designer: Francesco Guida

Exterior Designer: Alberto Mancini Yacht Design

Fuel Capacity: 9.500L / 2.510 US Gal

Water Capacity: 1.750L / 462 US Gal

Gross Tonnage: 155 Ton

Engines: 2, MTU, 16V 2000 M96L, 2600, Diesel

Cruising Speed: 28 knots

Max Speed: 36 knots

Range: -

Classification: CE

Description

Accommodation Overview:

Accommodation for 8 guests in 4 staterooms. 4 crew.

Owner

The owner's cabin features an LG 55" Smart TV 4K, Sonos Connect Amp 55W, Sonos Beam and Sonos Subwoofer. Owner options include a custom closet in lieu of bar, longer sofa, split dressing-room drawers, custom storage, integrated bidet faucets, new closet, A/V arrangement, and safe.

Guests

Accommodation is for 8 guests in 4 cabins. Guest entertainment includes LG 32" Smart TVs in guest cabins, Sonance speaker, and LG 24" Smart TV in the twin cabin. Options include integrated bidet faucets in the VIP, starboard side guest, and port side guest cabins, plus a third bed.

Crew

Crew accommodation is for 4 crew in 2 cabins. The document references a crew cabin, crew area, captain cabin, and dinette. Crew-area options include an additional bed in the captain cabin, another in the dinette, and a fourth folding bed in the crew area, plus pump alarm relay panel in the crew cabin.



Machinery Details

Main Engines:

2x MTU 16V 2000 M96L - 2600 Hp
Gearboxes: ZF 5050V
Propulsion: prop shaft

Other Machinery:

Stabilizers: Seakeeper 35
Bow thruster: Side-Power SH420kg
Air conditioning: Condaria Dometic PCWM/VAR 41003
Water systems: Idromar MC55 Speciale 250 L/h watermaker

Generators

2x 28kW Kohler
Gen hours: 320 h
Shore Power: 125 amp + 63 amp
Batteries: all batteries are AGM type
540 AH - 24V service batteries
2 x 180 AH - 24V battery sets for engines 180 AH - 24V battery set for engine electronics
2 x 90 AH - 12V battery sets for generators
Chargers: 2x Mastervolt 80 AH - 24V DC battery charger
Mastervolt 30 AH - 24V DC engine battery charger
Mastervolt 15 AH - 24V DC generator battery charge

Communication & Navigation

Communication Equipment

Predisposition for SAT antenna TV6/TV8

Navigation Equipment

3rd station wire remote control for engines, thrusters and anchor

MTU joysticks with DPS in fly and main helm

Electric searchlight

Simrad AIS Security

Fire Fighting & Safety

Panasonic CCTV cameras

Safety equipment according to class and flat

Automatic fire control system

Emergency engine / generator switch off control in cockpit

Gianneschi ACB-431 / 24V pump alarm relay panel in crew cabin

3x smoke detectors

2x Sea Fire display panels

Deck Equipment

2x Italwinch anchor windlasses

2x galvanised steel anchors, 60kg

2x anchor chain stoppers

2x tender garage with 24v winch

Opacmare passerelle

Hydraulic garage door swimming platform

Aft deck, flybridge, bow and beach club awnings

All exterior covers

Hauling / launching system for tender in garage

Automatic hydraulic system for side boarding gates 120m chains

Shore water plug on bow

Cover for garage door

Fresh cold water plugs for deck wash

Electric up and down tables on fly

Automatic hi lo tables on bow with sunbathing cushion

L-shape sofa on portside flybridge

Sun shade sail on bow with removable poles

Sun shade sail on flybridge with removable poles

Bimini in cockpit

Teak floor for flybridge

Luxury lights package for exteriors

2x spotlights installed on aft fly

2x flood lights installed on bow

2x vertical door fridges on starboard side cockpit storage

Icemaker on flybridge

BBQ and double electrical plates on fly; Refrigerator in cockpit

Tenders & Toys

Hauling / launching system for tender in garage

Entertainment Equipment

LG 55" Smart TV 4K
Sonos Connect Amp 55W
Sonos Subwoofer Sonos Playbar
LG 55" Smart TV 4K
Sonos Beam
LG 32" Smart TV
Sonance speaker
LG 24" Smart TV
Wine cooler in the salon

Domestic Equipment

Miele appliances
Dishwasher
Double stainless steel sink
Induction type four-hob range
Extractor hood
419L fridge
247L freezer
76L oven
Dumbwaiter
Washer dryer
Freezer with lateral vertical door not drawer

Refit History

2025 Paint under warranty being completed

BARNES
YACHTING



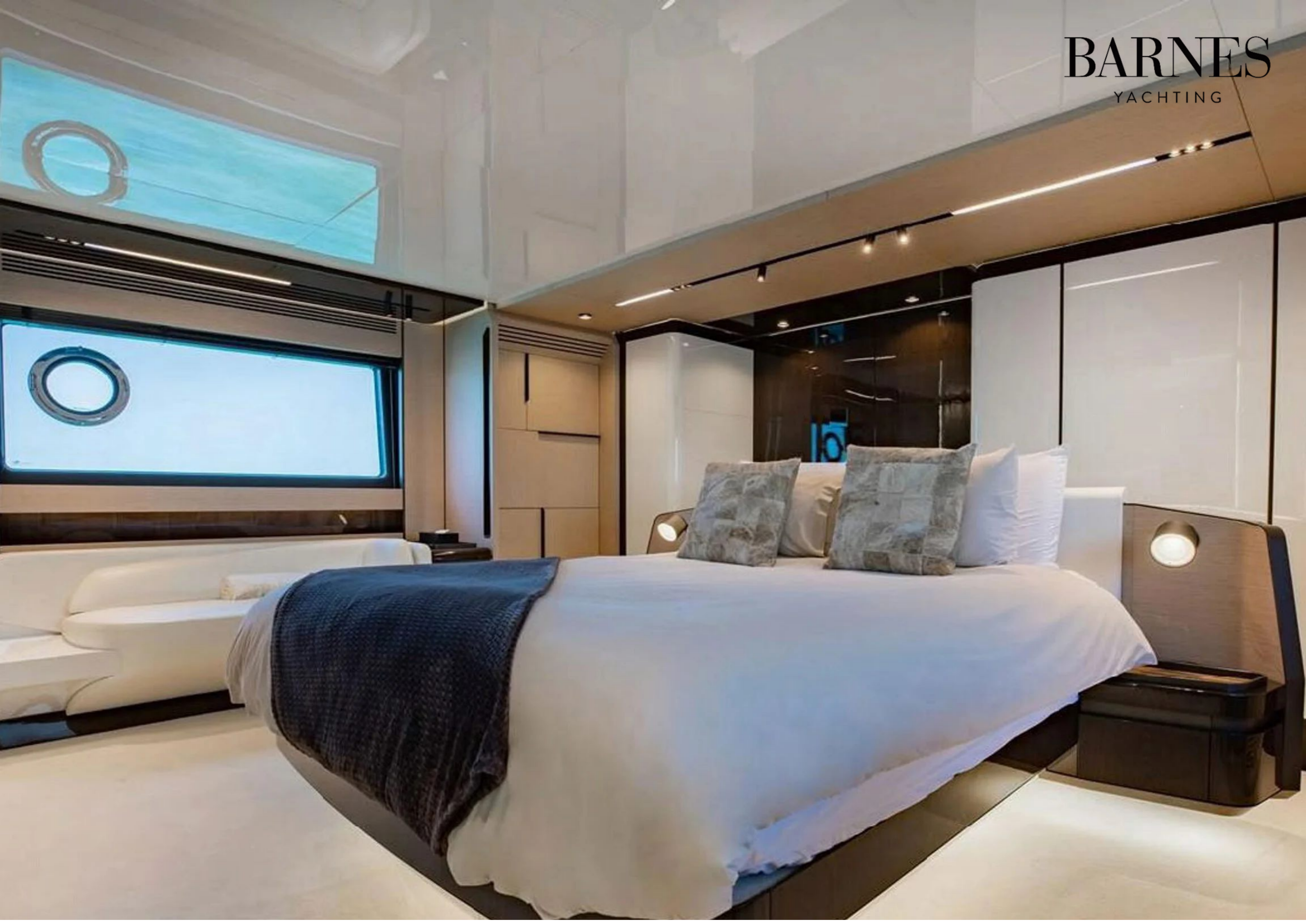


BARNES
YACHTING





















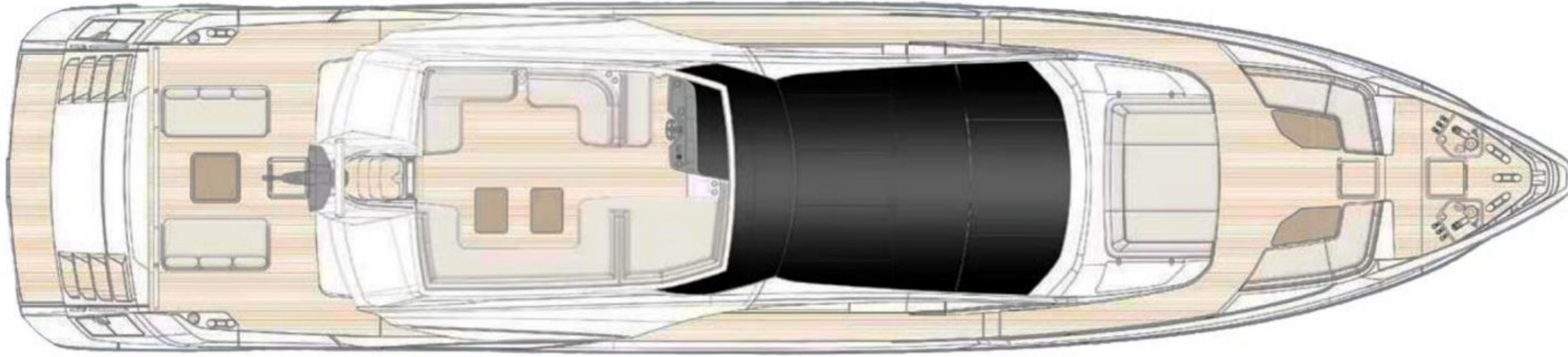
Vessel
Details

Guide Price: €4.950.000
Length: 28.7m (94.1')

Built in: 2022
Lying: Imperia, Italy

Crew: Up to 4
Flag: Australia

Disclaimer: These particulars have been prepared by Barnes Yachting from information provided by the sellers and are intended as a general guide to the vessel. Barnes Yachting cannot, however, be liable for any inaccuracy. It is up to the purchaser to confirm details of concern to him by survey, inspection and/or enquiry of the seller and to ensure that the purchase contract properly reflects his concern and specific details upon which he may rely. Barnes Yachting will always advise an independent survey.



Flying bridge



Main deck



Lower deck

BARNES
YACHTING



BARNES YACHTING

+34 634 81 37 95

Europe +44 20 4587 8777 / / USA +1 305 525 9301

yachting@barnes-international.com

www.barnes-yachting.com

