



MARIETTE
Herreshoff

BARNES
YACHTING





MARIETTE
Herreshoff

Grace, Glory and Ocean Prestige

MARIETTE OF 1915 offers the rare pleasure of a genuine classic yacht in pristine condition, combining large open decks, huge interior volume and a graceful Herreshoff design with exceptional private cruising appeal.

Her 38.00m profile, two-masted gaff schooner rig and celebrated regatta-winning capability create an ownership proposition of extraordinary character. Comfortable cruising, impressive deck space and a beautifully regarded classic interior deliver a refined lifestyle under sail, while her powerful aesthetic presence makes every arrival feel memorable, elegant and unmistakably distinguished.

With accommodation for 6 guests in 3 cabins and up to 8 crew, MARIETTE OF 1915 balances intimacy, service and performance with confidence. Recent major works at Pendennis, extensive system renewal and a multi million GBP refit support a yacht prepared for demanding cruising, competitive sailing and proud private enjoyment. Her VAT exempt status in the EU further strengthens her appeal for a discerning owner seeking distinction, comfort and pedigree, while proven ocean cruising and notable regatta success add depth to the ownership experience. Authenticity, presence, capability and style combine for memorable time confidently and fully enjoyed aboard.





BARNES
YACHTING





MARIETTE
Herreshoff

Specifications

Length: 38m (124.6')

Beam: 7.2m (23.6')

Draft: 4.6m (15.1')

Flag: Isle of Man

Location: Mediterranean

Year Built/Refit: 1915 / 2018

Builder: Herreshoff

Accommodations: 6 guests in 3 cabins

Crew: Up to 8 crew

Price: €7,000,000

VAT Exempt

General Information

Type: Sail

Construction: Steel Hull and Teak Superstructure; Teak Decks

Interior Designer: Nathanael Greene Herreshoff

Exterior Designer: Nathanael Greene Herreshoff

Fuel Capacity: 6,200L / 1,638 US Gal

Water Capacity: 1,600L / 423 US Gal

Gross Tonnage: 102 Ton

Engines: 2, Caterpillar, 3208, 150, Diesel

Cruising Speed: 8 knots

Max Speed: 12 knots

Range: 1,500 nm @ 8 knots

Classification: -

Description

Accommodation Overview:

Accommodation for 6 guests in 3 staterooms. 8 crew.

Owner

The Owner benefits from a Master cabin with separate office, creating a private retreat with dedicated space for quiet work, personal organisation and relaxed time away from the main guest areas. Its separation adds comfort, discretion, calm and prestige within the private suite.

Guests

Guest accommodation is arranged for 6 guests in 3 cabins, with the Master cabin complemented by 1 Twin cabin and 1 Bunk cabin. This layout provides an intimate onboard environment, suited to private cruising with family or close guests, and refined days underway, while preserving the warm atmosphere expected aboard a classic yacht of this calibre.

Crew

Crew accommodation supports up to 8 crew in 3 cabins, including 1 Captain cabin and 2 Crew cabins. This arrangement underpins attentive service, confident operation and the polished experience expected aboard a yacht of this character, with capacity aligned to demanding cruising, regatta use and rewarding private ownership across varied programmes.



Machinery Details

Main Engines:

2x Caterpillar 3208 112 kW (150 Hp), zero-houred Spring 2021
Eng.1: 1,350 hours as of 06th Dec 2023
Eng.2: 1,350 hours as of 06th Dec 2023
2x Bruntons Varifold propellers
Mechanical - geared steering

Other Machinery:

Climma 120k BTU air conditioning
HEM water maker
Dometic toilet system

Generators

2x Kohler 28 kW (38 Hp)
Gen.1: 14,000 hours as of 06th Dec 2023
Gen.2: 6,000 hours as of 06th Dec 2023
3 phase - 220v and 24v DC electricity
1200 Amp hour Gel Cell batteries
Gel Cell type
12v main engine start
12v generator start
MasterVolt chargers

VIDEO

Communication & Navigation

Communication Equipment

Fleet 250 SATCOM

Multiple ICOM VHF

Navigation Equipment

Anshutz Std 22 gyro compass

Furuno echo sounder

JRC 4kw radar

Class A AIS

Furuno DGPS

Adrena and B&G Zeus chart plotter

B&G 5000 wind instruments

Deck Equipment

Herreshoff Windlass 11kw electric motor

2x 290 kg Fisherman anchors

2x 125m 20mm stud link chain

Full set awnings

Full set covers

Tenders & Toys

1x 5.00m motor launch "Capt Nat"

1x 4.20m Falmouth rowing punt "Wizard"

1x 4.20m Inflatable Zodiac boat with 25hp Yamaha

Dive compressor

2x Dive kits

Domestic Equipment

2x 400l fridges

1x 400l freezer

1x Gas powered hob

Gagenau electric oven

Miele washing machine; Tumble dryer

Sails & Rigs

720 m2 upwind sail area; 1,200m2 downwind sail area

Oregon Pine mast and spars, Spencer Thetis, Cowes

7 by 7 Stainless hand finished standing rigging

Polyester and Dyneema running rigging

Lewmar and Meissner winches

Refit History

2025

Routine paint and varnish to the exterior; Routine rig servicing work

Service work to generators, engines and various pumps; Refresh paint work in the crew area and galley; Deckhand insulation; Servicing of rigging gear; Scupper rust treat and paint job;

Varnish deckhouses, cap rail and spars; New 24 v Fire pump install;

Winter service of generators and main engines

2019-2022

2022 Anshutz Gyro compass install

2021 Main engines rebuilt

2019 New Climma Air Conditioning Plant install

2017-2018

Teak deck and plywood sub deck replaced; Deckbeams treated, painted and deck profile reinstated; 50m2 hull plating replaced and major steel repairs; Shaft alley gritblasted back to white steel and painted; Aft diesel tanks tops cut away and replaced

Steel water tanks replaced with modular stainless tanks

New galley arrangement; Deck upstands and transom scupper area replaced

All wiring replaced with new; All electric systems including batteries replaced

All plumbing replaced with new; Engineering systems removed for service and hull access

Headliner replaced; Guest and owner's cabin renewed with carpet

Improved engine room layout; B&G wind and nav instrument upgrade

1995

Recreation of original gaff rig with new wooden spars

BARNES
YACHTING











BARNES
YACHTING













BARNES
YACHTING





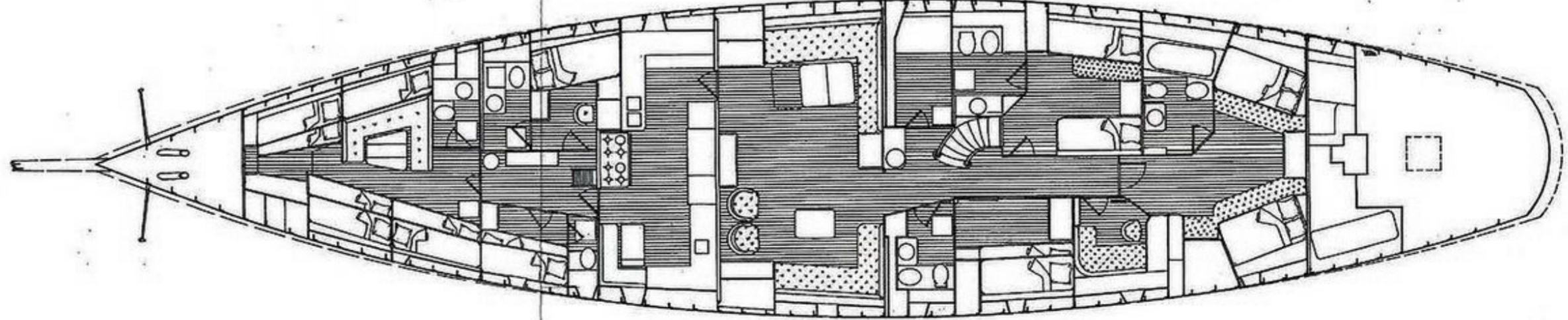
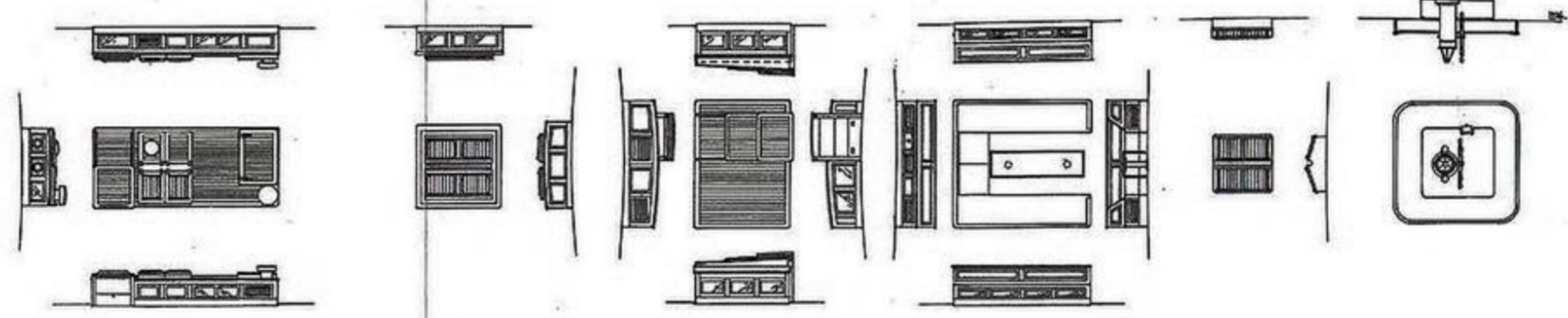
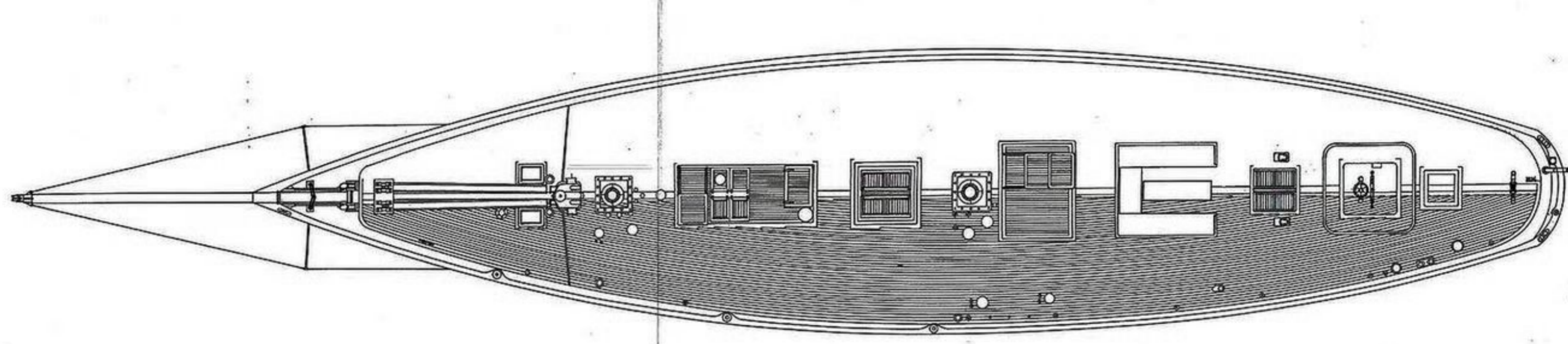
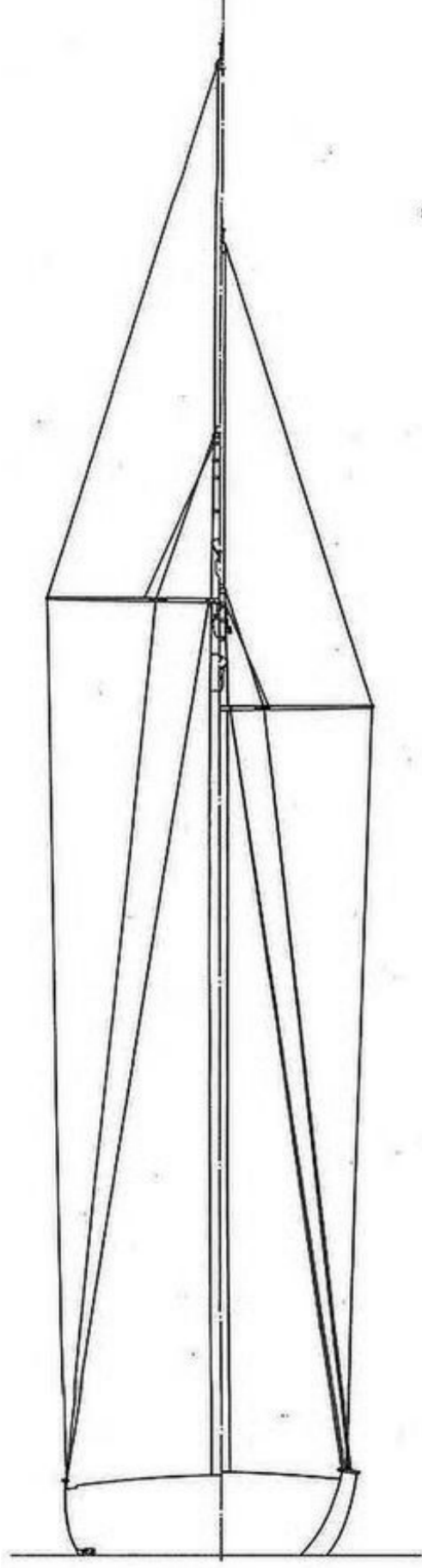
**Vessel
Details**

Guide Price: €7.000.000
Length: 38m (124.6')

Built/Refit: 1915 / 2018
Lying: Mediterranean

Crew: Up to 8
Flag: Isle of Man

Disclaimer: These particulars have been prepared by Barnes Yachting from information provided by the sellers and are intended as a general guide to the vessel. Barnes Yachting cannot, however, be liable for any inaccuracy. It is up to the purchaser to confirm details of concern to him by survey, inspection and/or enquiry of the seller and to ensure that the purchase contract properly reflects his concern and specific details upon which he may rely. Barnes Yachting will always advise an independent survey.





BARNES YACHTING

+34 634 81 37 95

Europe +44 20 4587 8777 / / USA +1 305 525 9301

yachting@barnes-international.com

www.barnes-yachting.com

